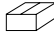


ASSEMBLIES FOR WORK SURFACES

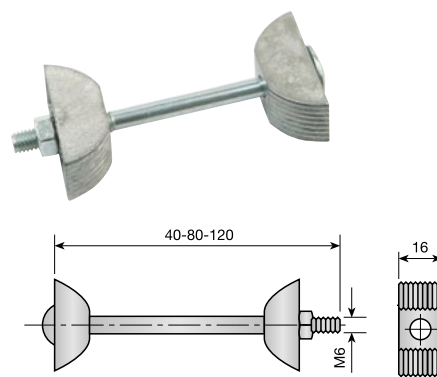
1 HALF MOON JOINING BOLT

This invisible joining bolt allows the union of worktops, panels and mitred profiles in a quick and safe manner.

Half Moon Joining Bolt.

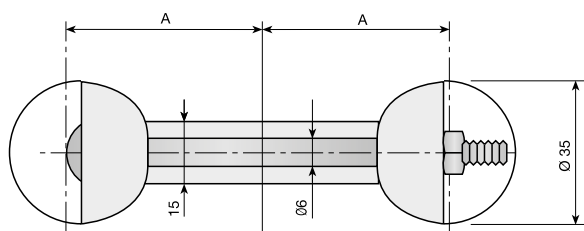
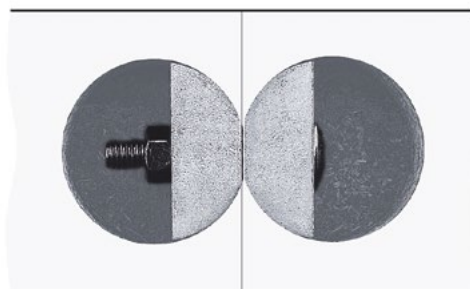
L (mm.)		
40	521.604.031	250
80	521.608.032	
120	521.612.033	

Each assembly fitting consist of 2 bodies, 1 bolt and 1 nut.

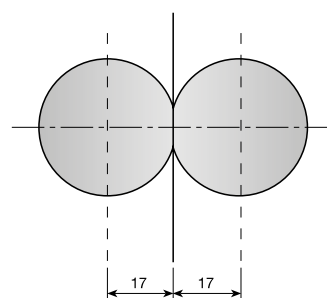
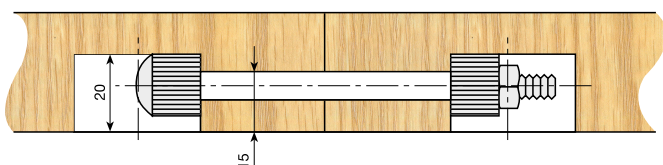


Assembly method

Drill a Ø35mm by 20mm deep hole a distance equivalent to A from each edge to be joined together. In line with the centre of the drill holes, join together via a 15mm deep x 15mm wide groove. By tightening the nut, the half moon bodies force the 2 joint edges together.



Screw	Drilling distance "A"
40mm.	de 17 a 20mm.
80mm.	de 33 a 40mm.
120mm.	de 53 a 60mm.



With the centre at 17mm there is no need for the groove.