

LEGS


Stabilizer legs for sideboards.
Easy assembly and regulation.

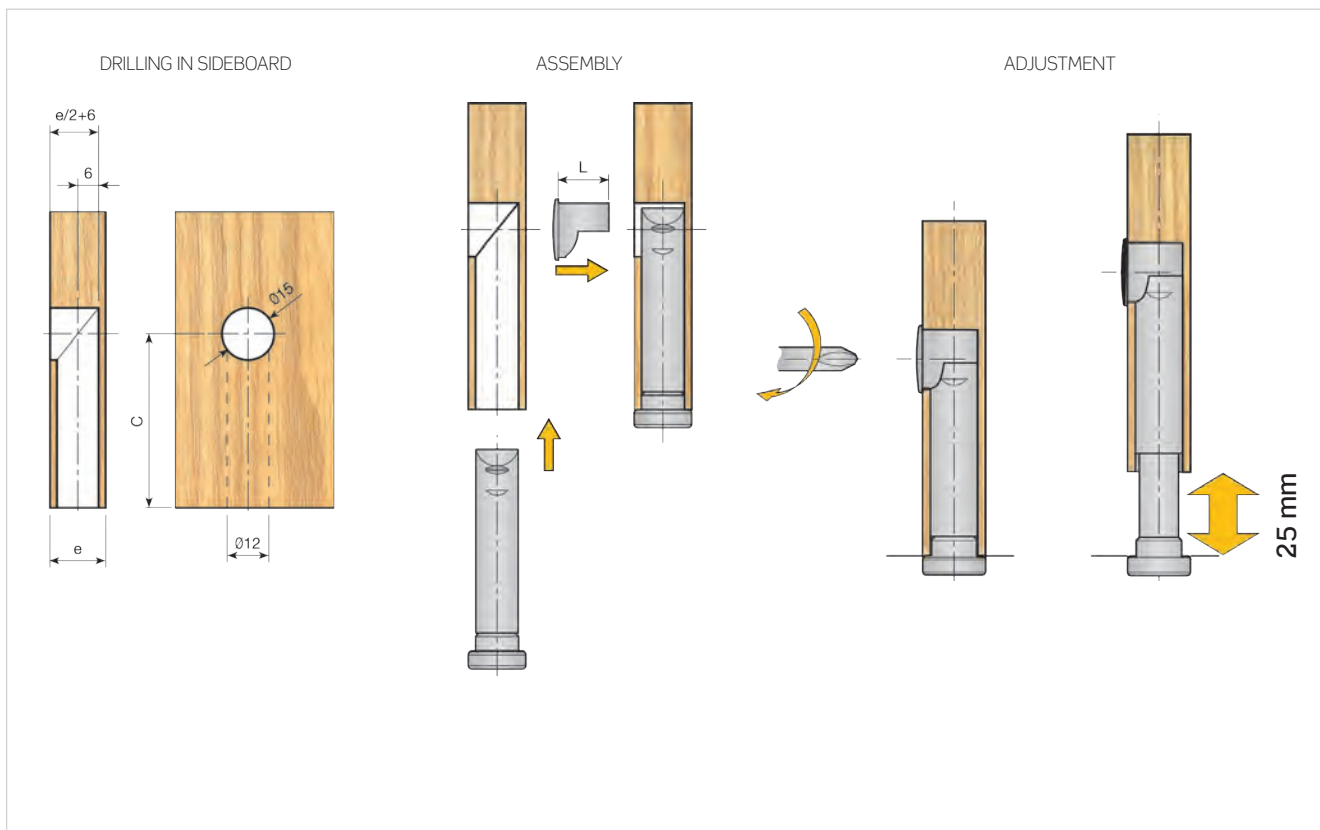
1	ADJUSTABLE LEG FOR SIDEBOARDS 1	144
<hr/>		
2	ADJUSTABLE LEG FOR SIDEBOARDS 2	145
<hr/>		
3	CABINET LEGS	146
	■ MAMUT-5 leg	146
	■ MAMUT-6 leg	148
<hr/>		
4	SANDY LEG	153
<hr/>		
5	LEVELLING WEDGE	153
<hr/>		

1 ADJUSTABLE LEG FOR SIDEBOARDS 1

Stabilizer leg for sideboards from 16mm.
Easy assembly and adjustment up to 25mm.

Stabilizer leg, Ø12mm., and support cover.

	Sideboard thickness	Sideboard thickness	Sideboard thickness	
	e= 16-19	e= 20-25	e= 30-40	
C center	L = 14	L = 17	L = 24	
50	414.905.024	417.905.025	424.905.025	
70	414.907.021	417.907.022	424.907.022	
90	414.909.025	417.909.026	424.909.026	100
120	414.912.024	417.912.025	424.912.025	
140	414.914.021	417.914.022	424.914.022	

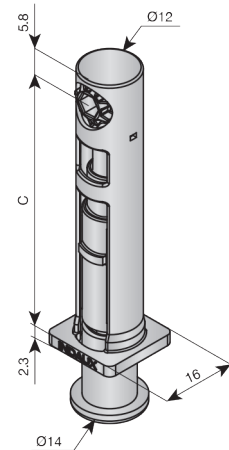


2 ADJUSTABLE LEG FOR SIDEBOARDS 2

Stabilizer leg for sideboards from 16 mm.
Easy assembly and adjustment up to 24 mm. with Allen key

Stabilizer leg, Ø12 mm.

Length				
C (mm)	A (mm)	Adjustment (mm)	Natural	
24	7	15	416.024.022	400
32	7	15	416.032.024	300
52	7	25	416.052.022	200
70	7,5	25	416.070.023	150
100	7,5	25	416.100.020	100
120	7,5	25	416.120.025	100



DRILLING IN SIDEBOARD

C	D=C+6
24	30
32	38
52	58
70	78
100	106
120	126


ASSEMBLY

ADJUSTMENT


3 CABINET LEGS

MAMUT-5 cabinet leg

Screw-fix mounting base.


		
Black	411.400.021	200

Bag of legs with base.


		
Reg. 100-160	410.214.022	25
Reg. 140-220	410.222.024	

Each bag containing 4 bases and 4 adjustable legs.

Single dowel-fix / screw-fix mounting base.

Ø	Black	
13	411.513.023	200
15	411.515.020	

Bag of legs with bases for Ø13 mm drilling.

		
Reg. 100-160	410.314.026	25
Reg. 140-220	410.322.021	


Each bag contains 4 bases and 4 adjustable legs.

Bag of legs with bases for Ø15 mm drilling.


		
Reg. 100-160	410.514.020	25
Reg. 140-220	410.522.022	

Each bag contains 4 bases and 4 adjustable legs.

Triple dowel-fix / screw-fix mounting bases.

		
Black	411.620.020	200

Bag of legs with bases.


		
Reg. 100-160	410.614.024	25
Reg. 140-220	410.622.026	

Each bag contains 4 bases and 4 adjustable legs.

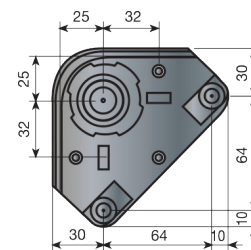
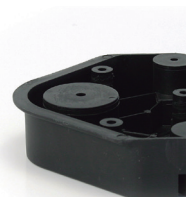
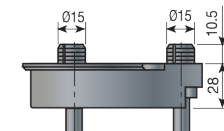
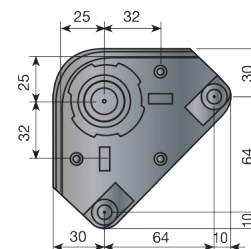
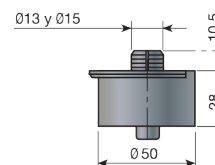
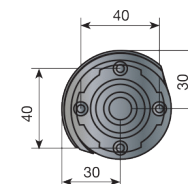
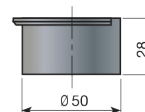
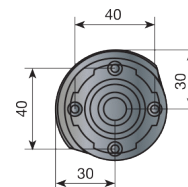
Screw-fix mounting bases.

		
Black	411.200.020	200

Bag of legs.

		
Reg. 100-160	410.114.025	25
Reg. 140-220	410.122.020	

Each bag contains 4 bases and 4 adjustable legs.

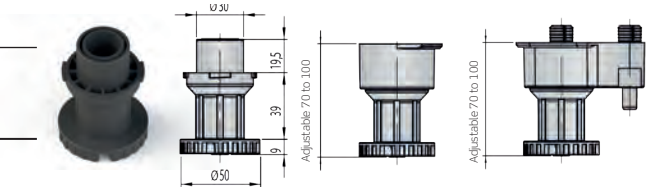


■ MAMUT-5 cabinet leg

Bag of adjustable legs, 48 mm.

Black 414.805.020 50

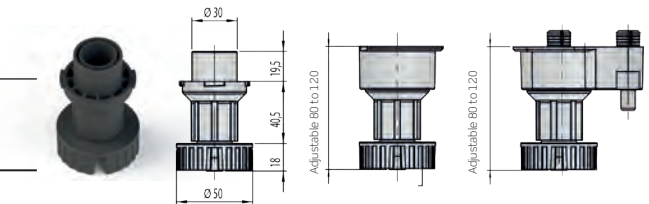
Each bag contains 4 adjustable legs.



Bag of adjustable legs, 58 mm.

Black 414.806.022 50

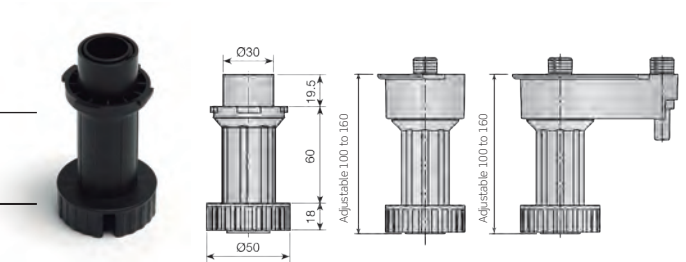
Each bag contains 4 adjustable legs.



Bag of adjustable legs, 78 mm.

Black 414.808.026 50

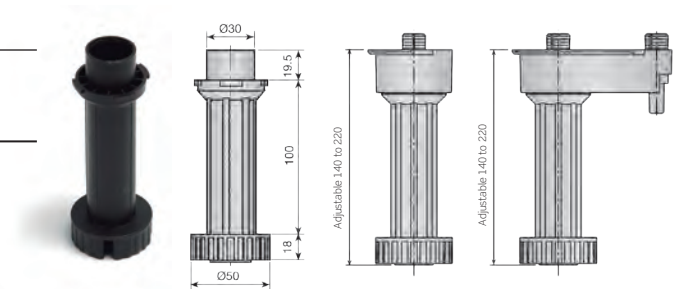
Each bag contains 4 adjustable legs.



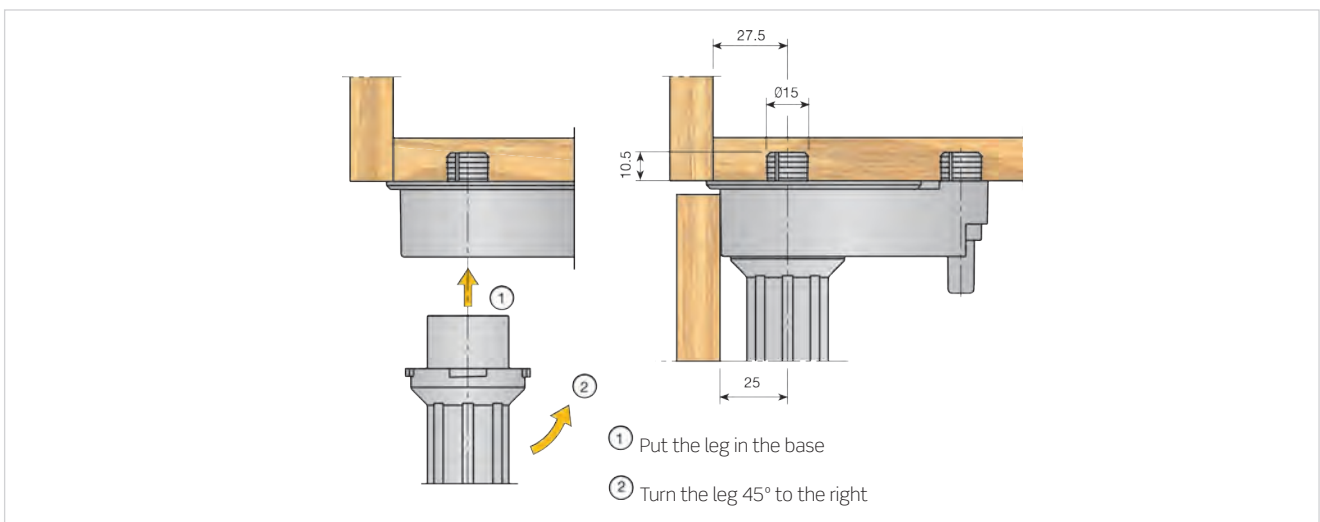
Bag of adjustable legs, 118 mm.

Black 414.812.020 50

Each bag contains 4 adjustable legs.



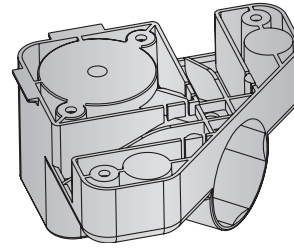
Technical data



■ MAMUT-6 cabinet leg

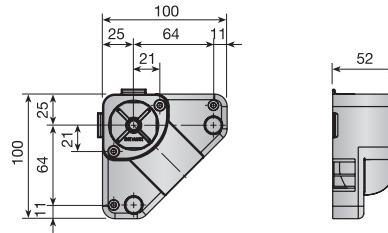
Screw-fix mounting base.

		
Black	411.900.020	200




Bag of legs with base.

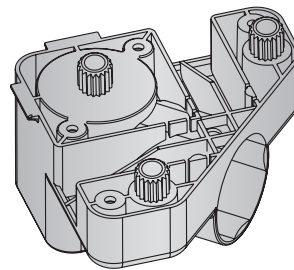
Length		
110	410.911.023	25
140	410.914.022	
170	410.917.021	
200	410.920.020	



Each bag contains 4 bases and 4 adjustable legs.

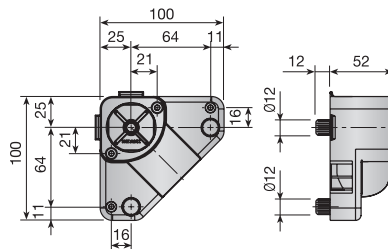
Screw-fix/dowel-fix 3 Ø12 pivot mounting base.

		
Black	411.812.026	200




Bag of legs with base.

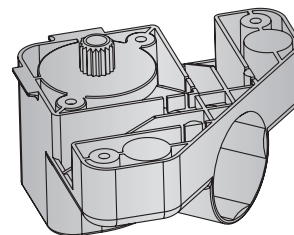
Length		
110	410.811.026	25
140	410.814.025	
170	410.817.024	
200	410.820.023	




Each bag contains 4 bases and 4 adjustable legs.

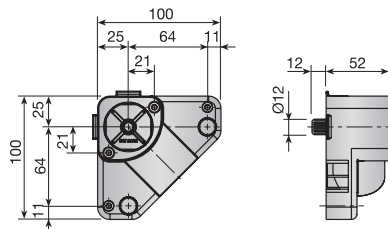
Screw-fix/dowel-fix 1 Ø12 pivot pin mounting base.

		
Black	411.712.022	200



Bag of legs with base.

Length		
110	410.711.022	25
140	410.714.021	
170	410.717.020	
200	410.720.026	



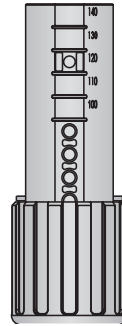
Each bag contains 4 bases and 4 adjustable legs.

MAMUT-6 cabinet leg

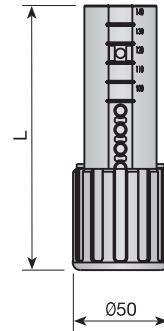
Bag of adjustable legs.

Leg length	Black	
110	417.111.026	50
140	417.114.025	
170	417.117.024	
200	417.120.023	

Each bag contains 4 adjustable legs.

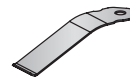


Leg length	L
110	108
140	138
170	168
200	198



Skirting board coupling.

Zinc-plated	415.600.032	500
-------------	-------------	-----



Technical data - Adjustments

Leg length	Adjustable
110	105-140
140	130-170
170	160-200
200	190-230

Leg length

Cutting the support

Skirting board coupling assembly

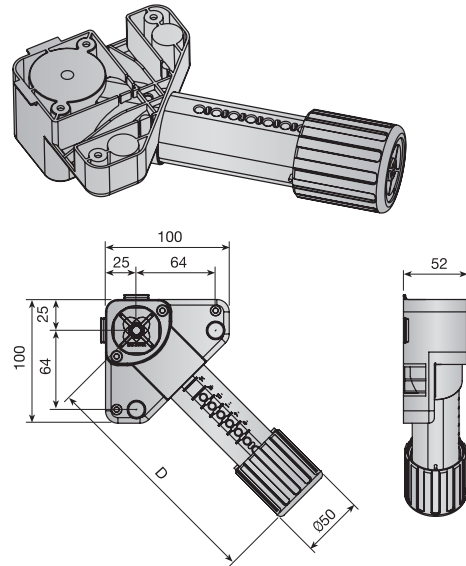
Skirting board

■ MAMUT-6 cabinet leg

Bag of screw-fix assembled legs.

Length		
110	409.911.025	25
140	409.914.024	
170	409.917.023	
200	409.920.022	

Each bag contains 4 legs.

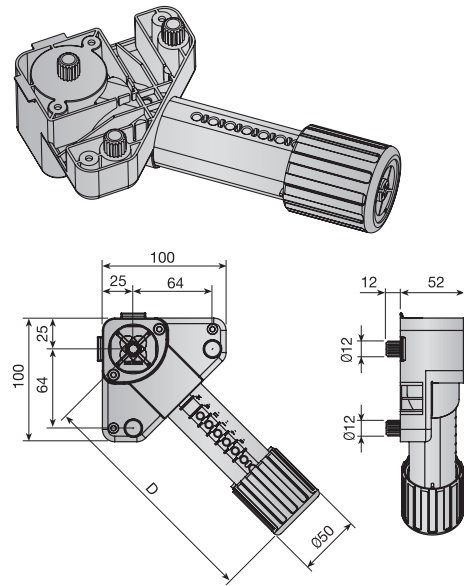


Bag of screw-fix/dowel-fix assembled legs.

Length		
110	409.811.021	25
140	409.814.020	
170	409.817.026	
200	409.820.025	

Each bag contains 4 legs.

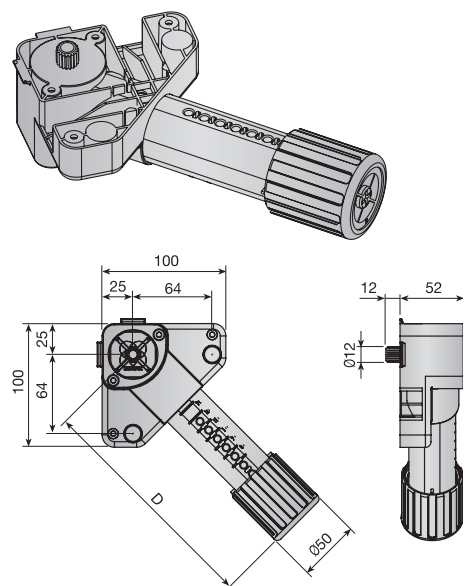
Length	D
110	130
140	160
170	190
200	220



Bag of screw-fix/dowel-fix 1 Ø12 pivot pin assembled legs.

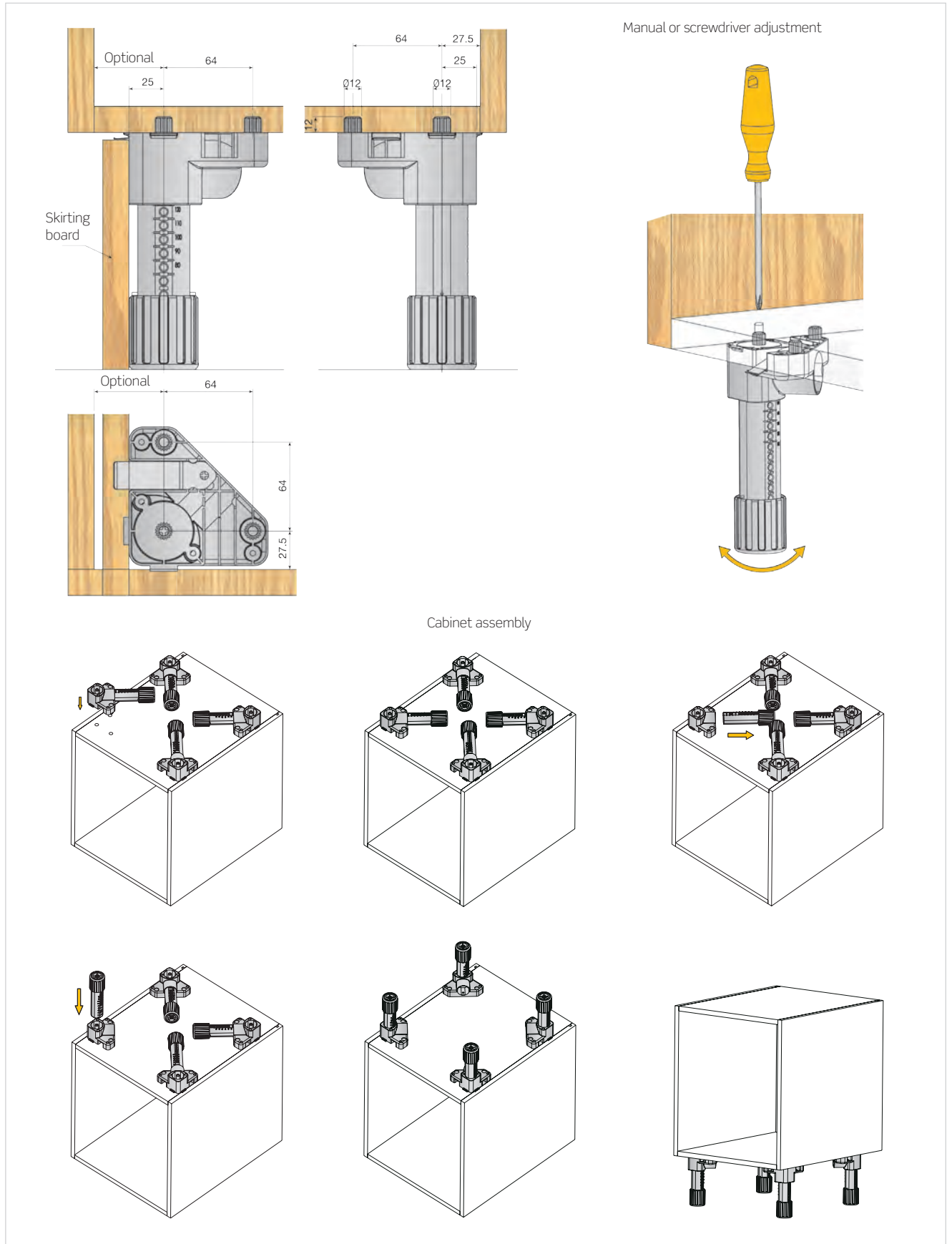
Length		
110	409.711.024	25
140	409.714.023	
170	409.717.022	
200	409.720.021	

Each bag contains 4 legs.

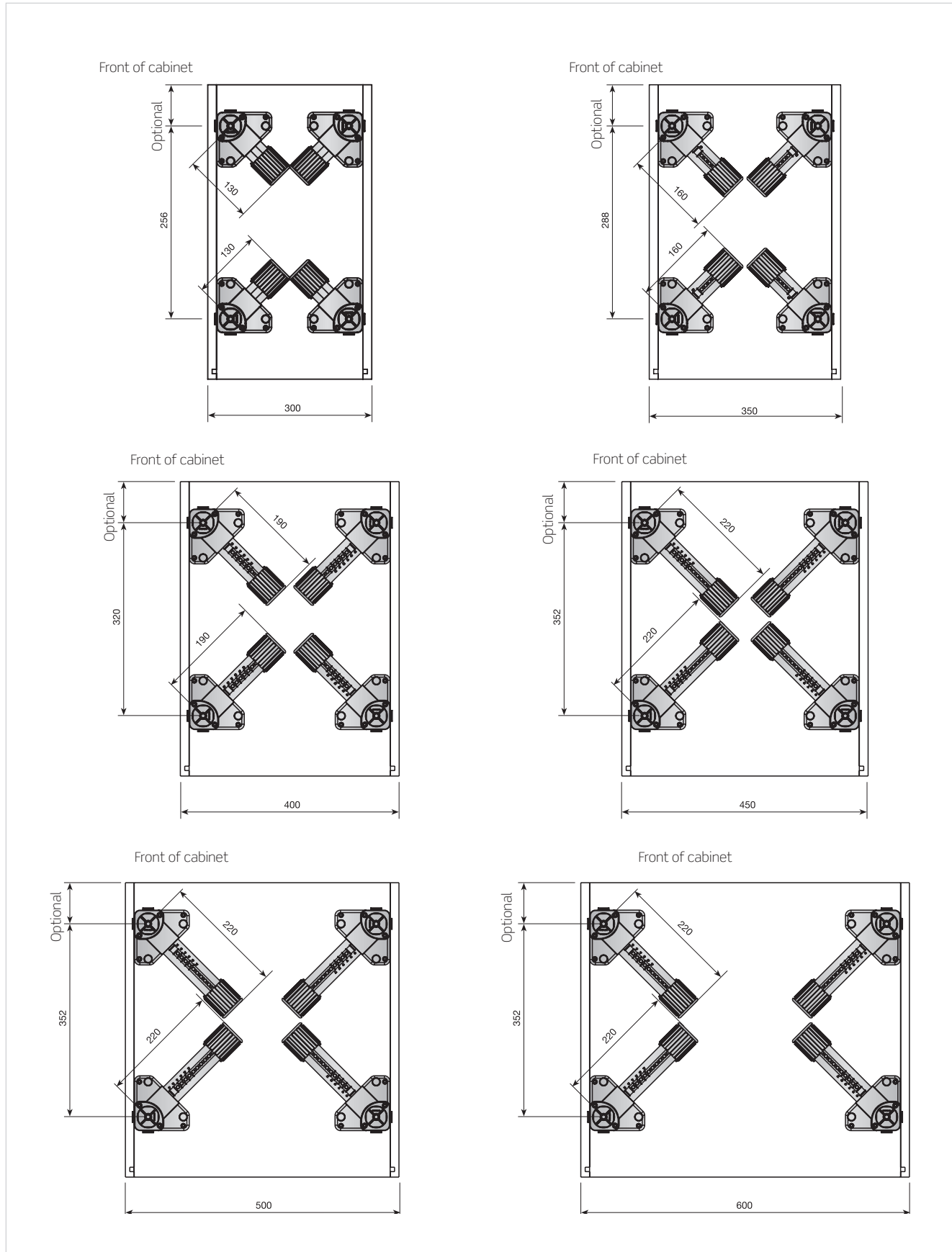


Technical Data

Assembly and adjustments




Assembled legs: leg arrangement according to cabinet

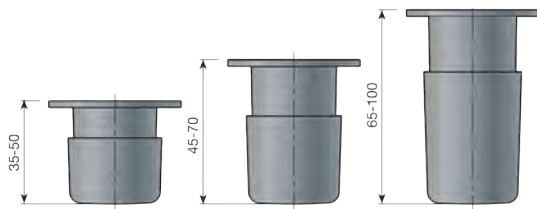


4 SANDY ADJUSTABLE PLASTIC LEG


Heavy duty leg with a steel adjustment bolt.

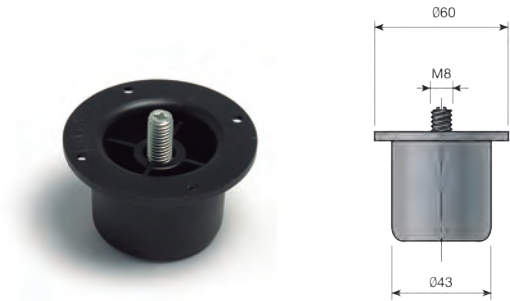
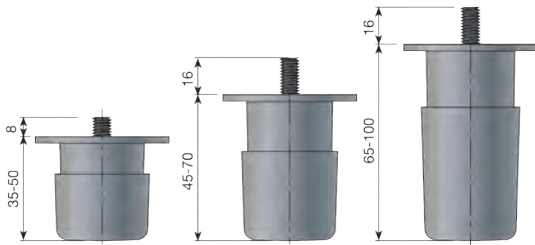
Externally adjustable leg SANDY.

Length	White	Black	
35 to 50	408.034.001	408.034.023	200
45 to 70	408.045.002	408.045.024	100
65 to 100	408.065.000	408.065.022	100



SANDY leg internal adjustment.

Length	White	Black	
35 to 50	408.134.005	408.134.020	200
45 to 70	408.145.006	408.145.021	100
65 to 100	408.165.004	408.165.026	100



5 LEVELLING WEDGE

Levelling wedge.

Color	Code	Part No.	
Brown	RAL 8016	460.000.015	1.000

Essential for all cabinets to prevent uneven floorproblems levelling from 1mm. to 8mm.

