

ALBATROS

Ergonomics and ease of movement

New range of lift-up systems for high wall units.





FULL ACCESS AT A GLANCE

ALBATROS expands Indaux's offer of lift-up systems, and is presently composed of two versions: one for the front of two folding doors (ALBA-T) and the other for a parallel opening door (ALBA-R).

The ALBATROS lift-up systems also incorporate the INDAmatic system for maximum smoothness of movement, being able to regulate the opening force and the soft-close depending on the weight of the door.

ALBA-T: The ideal solution for low ceilings

The ALBA-T system lowers the front, which is divided into two, for maximum use of space. Intermediate security hinge for finger pinch protection.

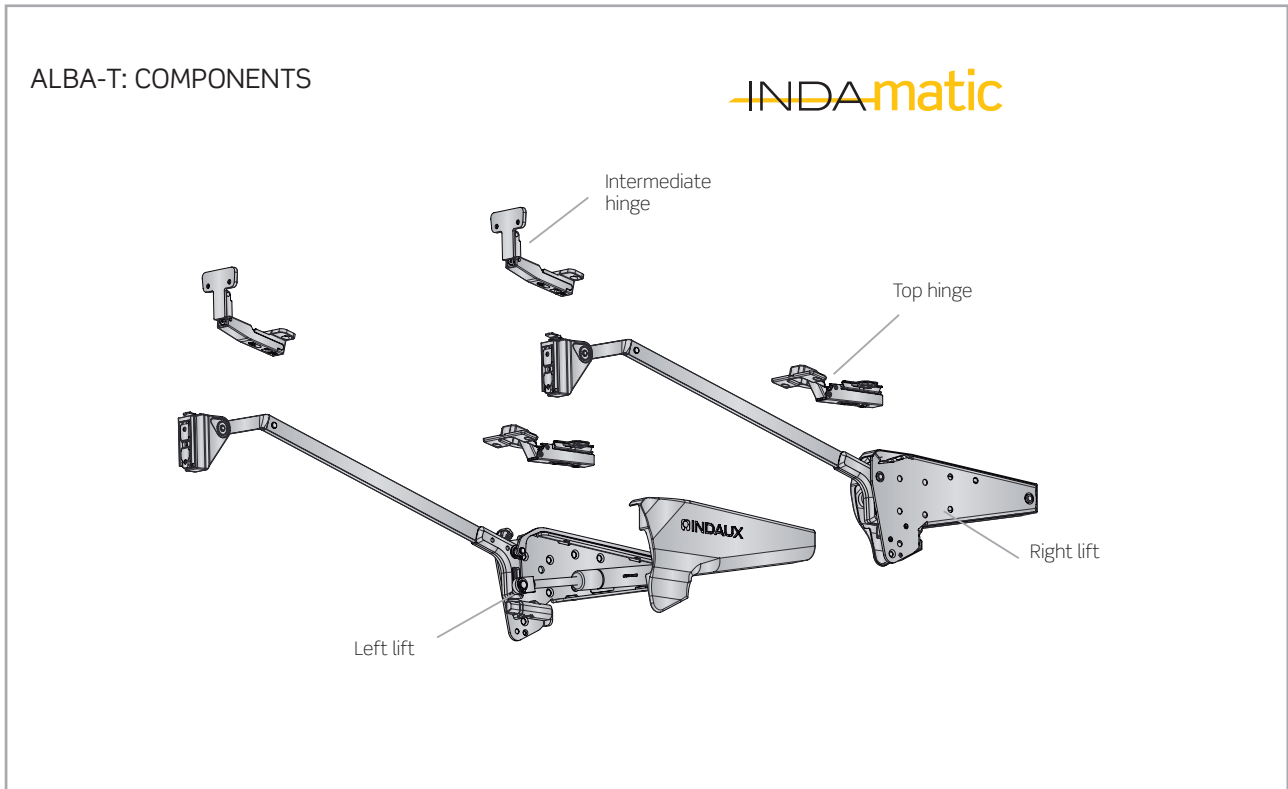


ALBA-R: For niche cabinets with cabinets above

The front moves upward vertically, so ALBA-R fitting is optimal in the case of superposed module or cornices. Fast and convenient access to the interior of the cabinet.







KEY BENEFITS

- > Smoothness of operation, even with large and high faces.
- > Strengthen the ergonomics and access to the interior of the module.
- > Minimal opening effort.
- > Versatility of applications.
- > Durability (30.000 cycles).
- > Incorporates the INDAmatic system for maximum smoothness, being able to regulate the opening force and the soft-close.
- > Intermediate security hinge in the ALBA-T for finger pinch protection.
- > Easy assembly.


1 ALBATROS LIFT-UP SYSTEMS WITH INDAmatic

ALBA-T

Pivot arm systems are a classic option to open high furniture which has evolved in its technical demands with new design lines in the upper area of the kitchen and home.

ALBATROS, the new family of pivot arms for Indaux lift-up doors, meets and exceeds requirements of this type of fitting, strengthened by the latest generation of the INDAmatic soft close system which comes as standard.

ALBA-T. Pivot arms for lift-up doors, two folding leaves.

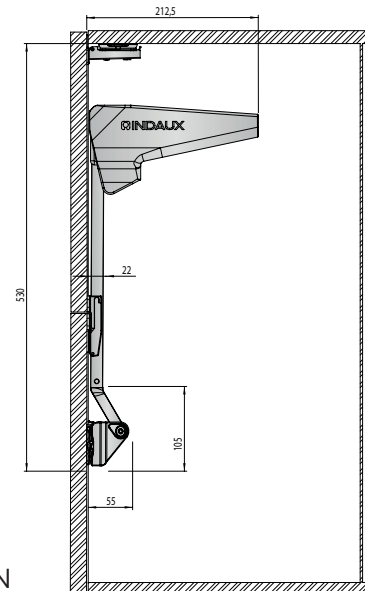
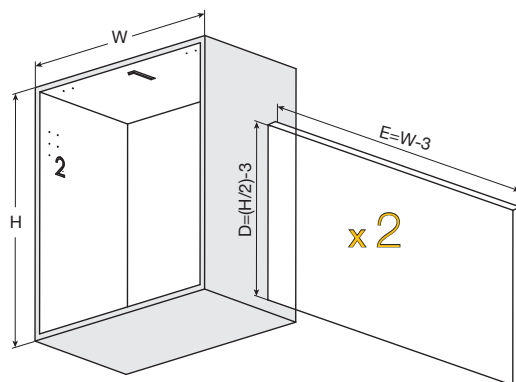
Weight per door		
2-5 Kg.	814.170.140	1

Each box contains: 1 lift each hand, 2 MESUCO 143 top hinges, 2 intermediate security hinges, 4 mounting plates, mounting screws, Allen key for adjustment and assembly instructions.

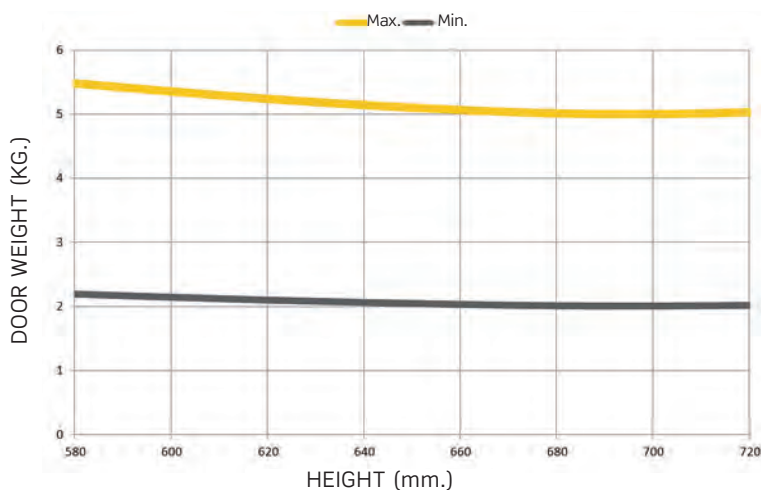


NOTE: Module height between 580 and 720 mm.

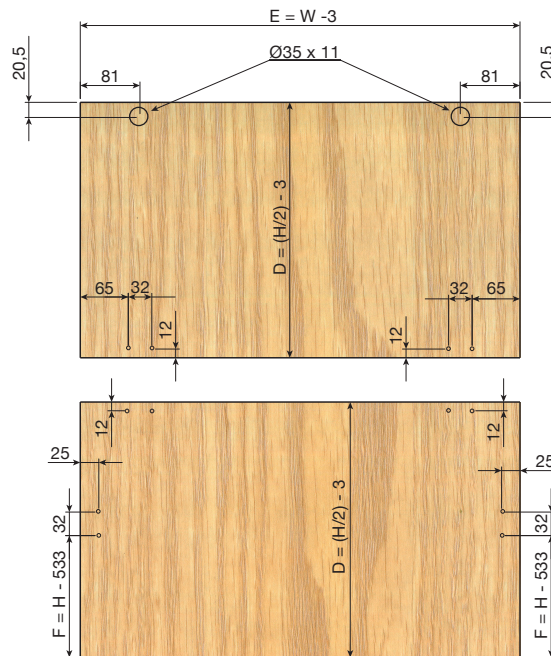
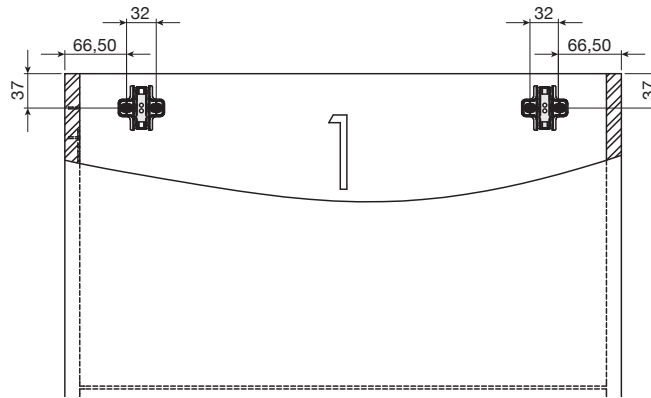
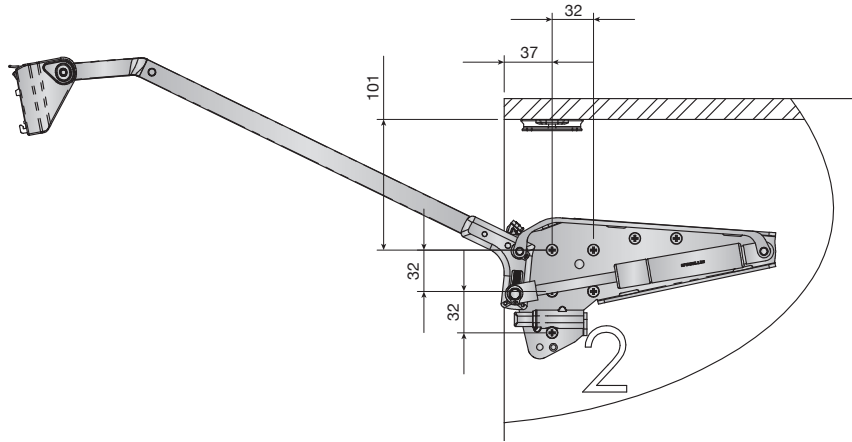
CABINET SIZE AND PIVOT ARM POSITIONING



DOOR WEIGHT CALCULATION



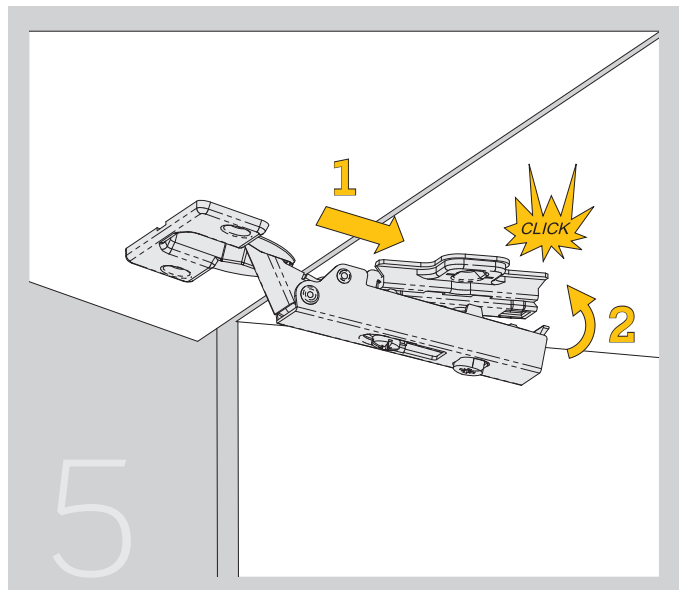
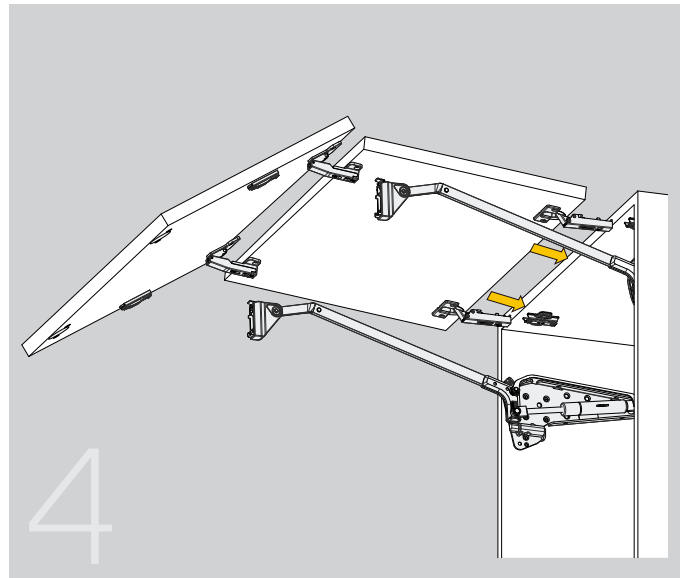
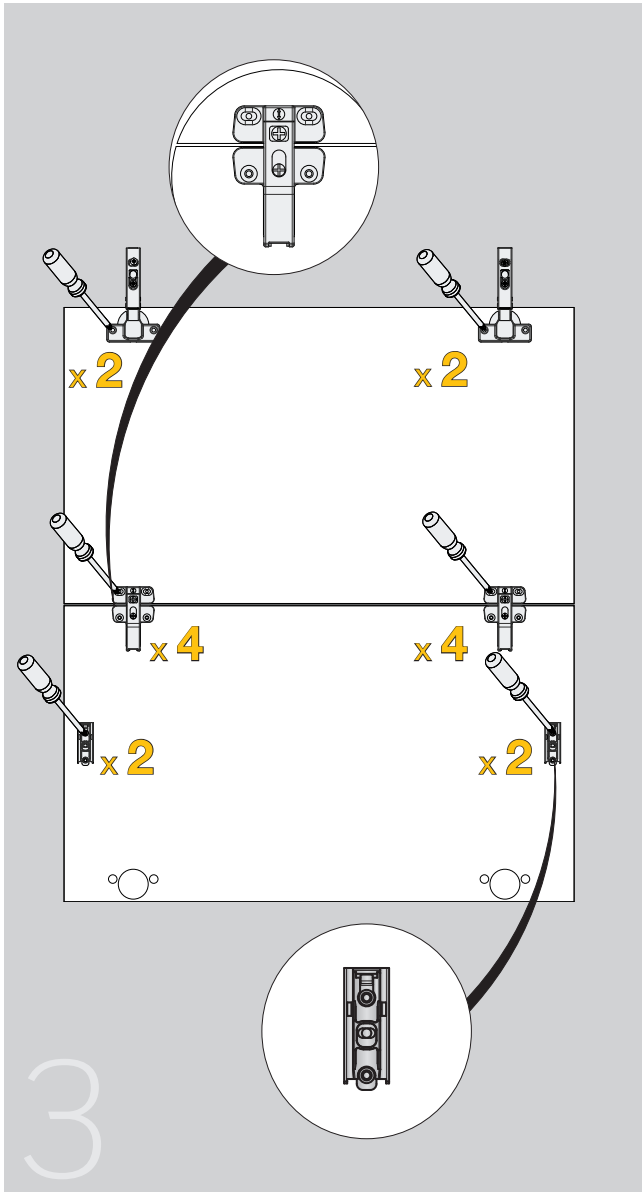
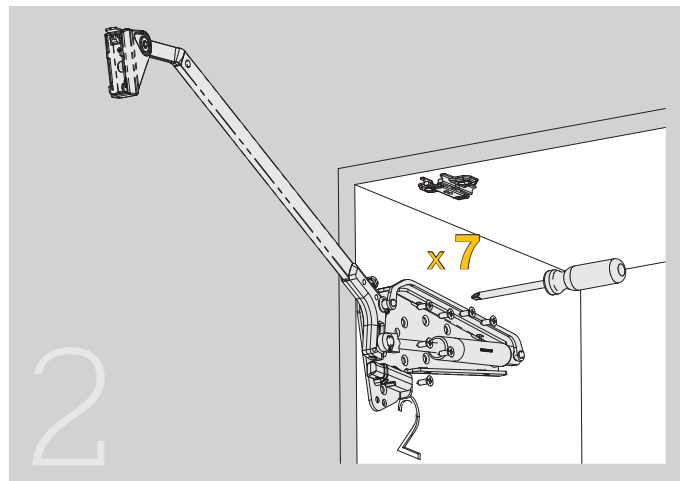
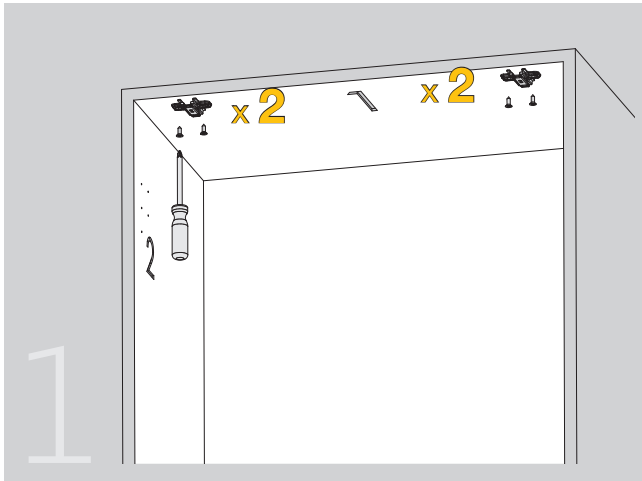
Technical data



■ Technical data

Assembly

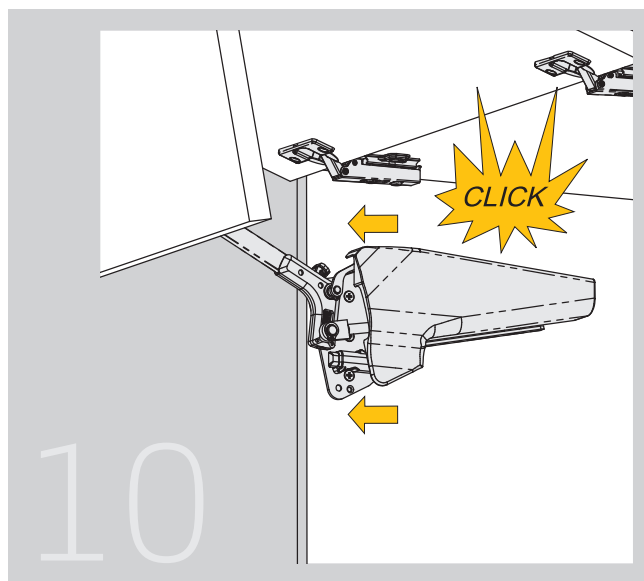
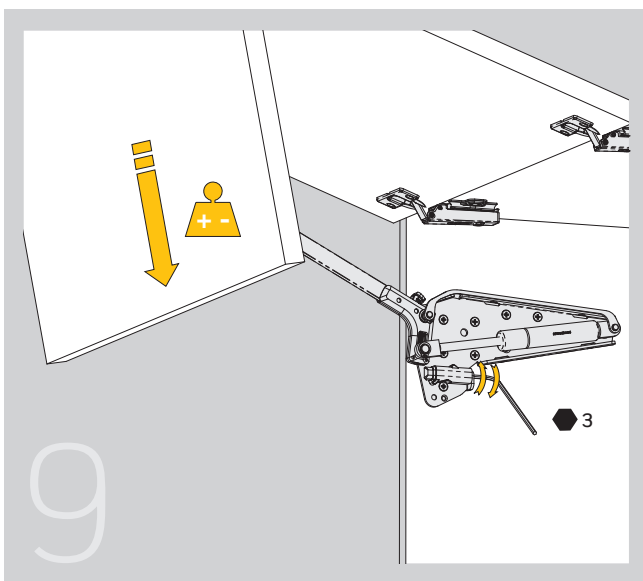
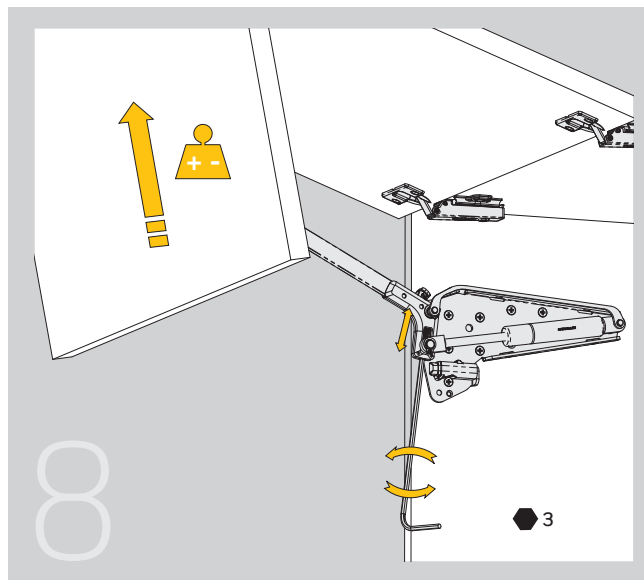
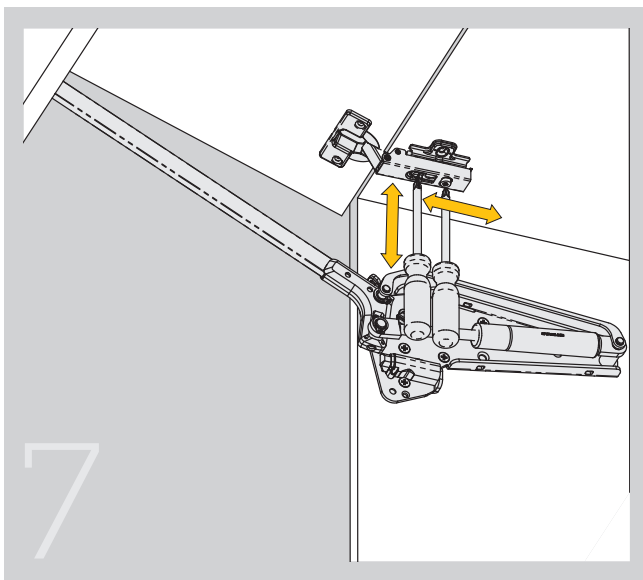
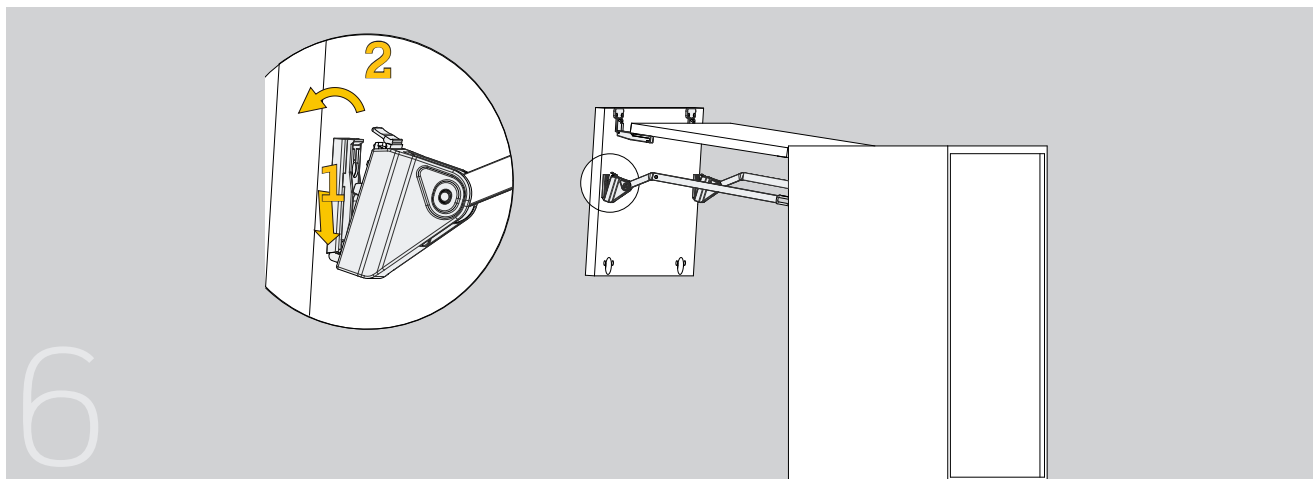
INDAmatic



■ Technical data

Assembly

INDAmatic



■ Technical data

Assembly

INDAmatic

