

FITTINGS

FOR HANGING DOORS


Aluminium and steel fittings for hanging sliding doors.

1	MASTER LUX.....	466
<hr/>		
2	MASTER MAS.....	470
<hr/>		
3	SISTEMA-4.....	473
<hr/>		

1 MASTER LUX


This aluminium system allows for 25-30-40-50mm. door thicknesses. Each fitting has two distances from the door to the floor 17 and 33mm.

Upper track.

	Cut-to-measure	6 m profiles	
Natural	707.000.501	707.060.502	6




Heavy duty upper track.

	Cut-to-measure	6 m profiles	
Natural	707.100.505	707.160.506	4




Lower track.

	Cut-to-measure	6 m profiles	
Natural	707.300.506	707.360.500	4




Set of upper and lower track.

	Cut-to-measure	
Natural	707.200.502	1




30mm dust guard for exterior door.

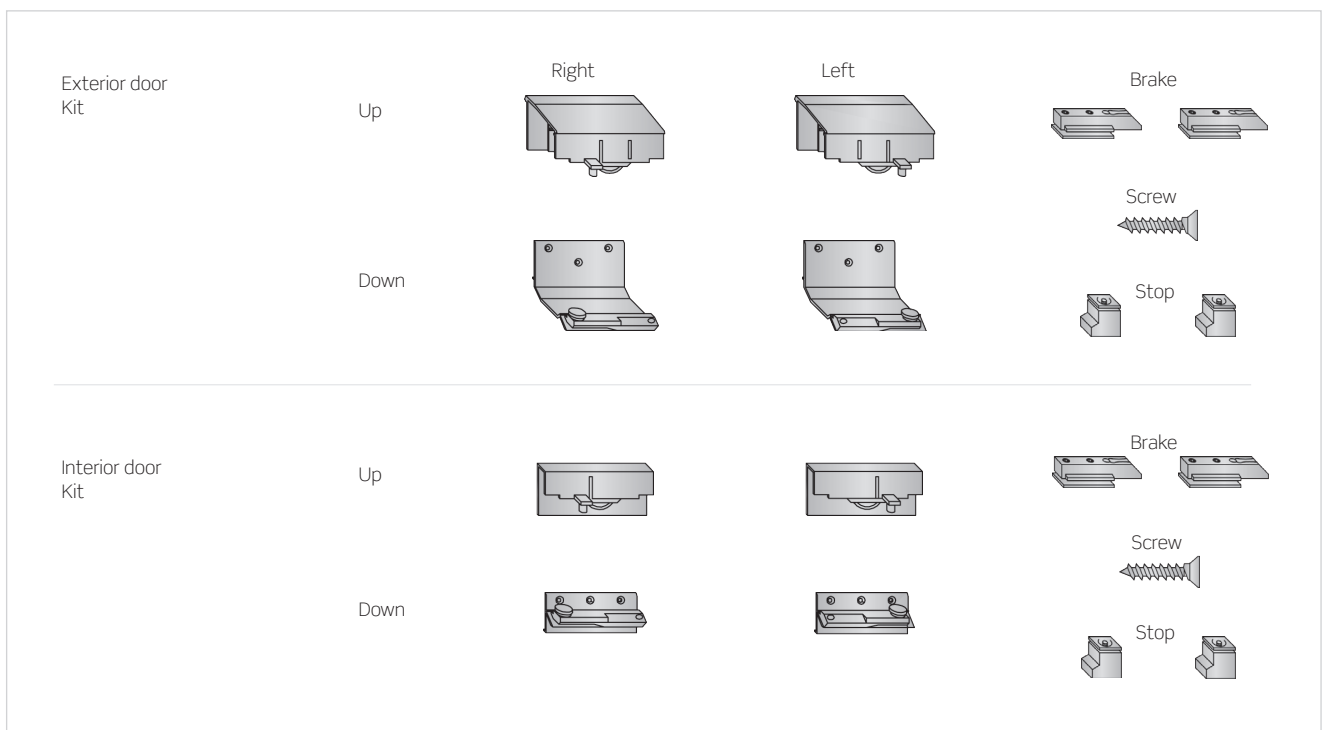
Lenght		
760	704.908.142	5
860	704.909.144	
960	704.910.146	
1060	704.911.141	



MASTER LUX fitting packs.

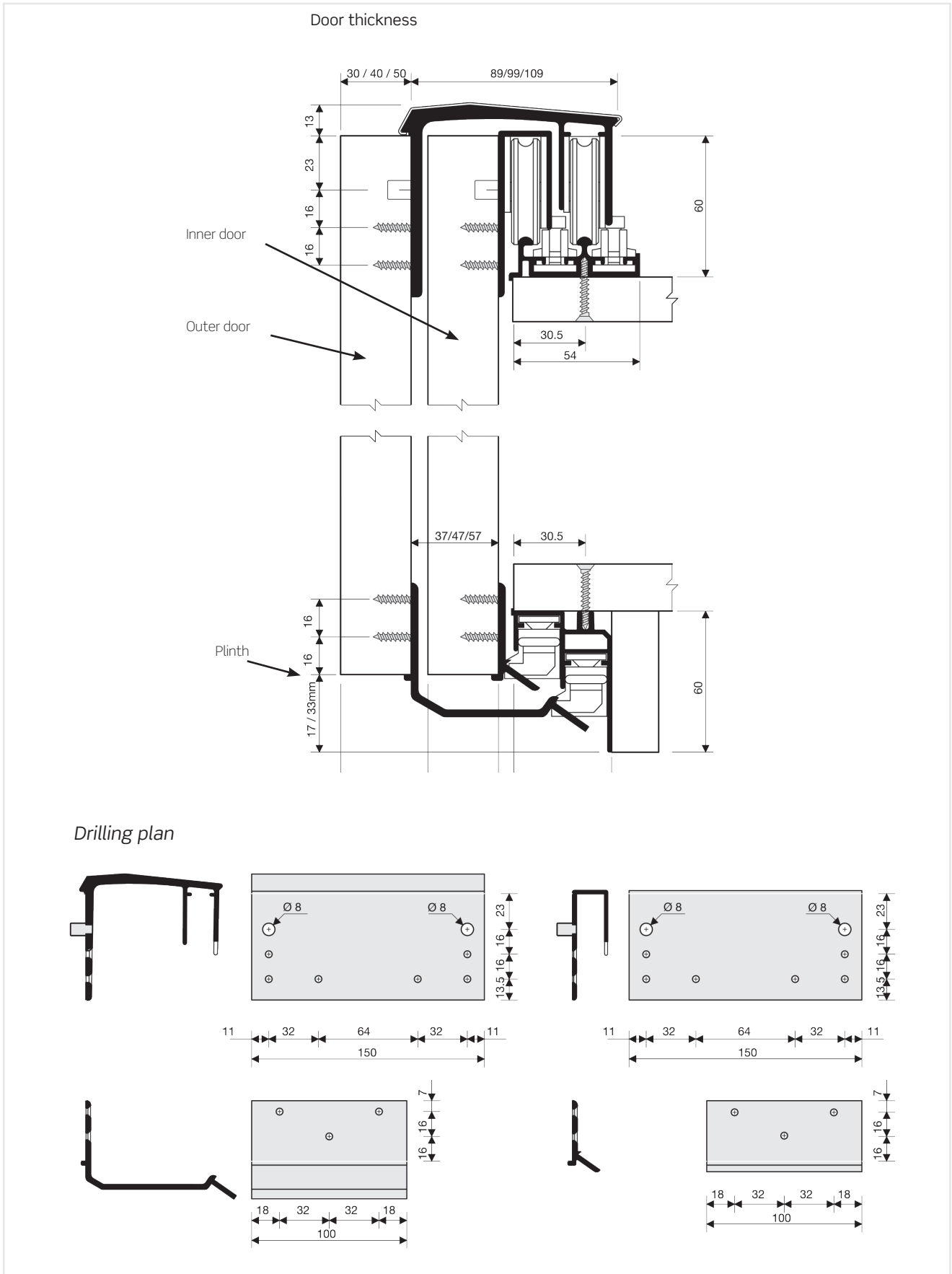
Load	Skirting board	Interior door	Exterior 30mm.	Exterior 40mm.	Exterior 50mm.	
50Kg.	17mm.	706.900.106	706.800.102			1
	33mm.	705.100.104	705.000.100			
100Kg.	17mm.	706.910.105	706.810.101	706.840.105		
	33mm.	705.110.103	705.010.106		706.850.104	

It contains the upper and lower rollers, brakes, stops and fixing screws ø3.9 x 13 necessary for one door.



■ Technical data

Assembling scheme



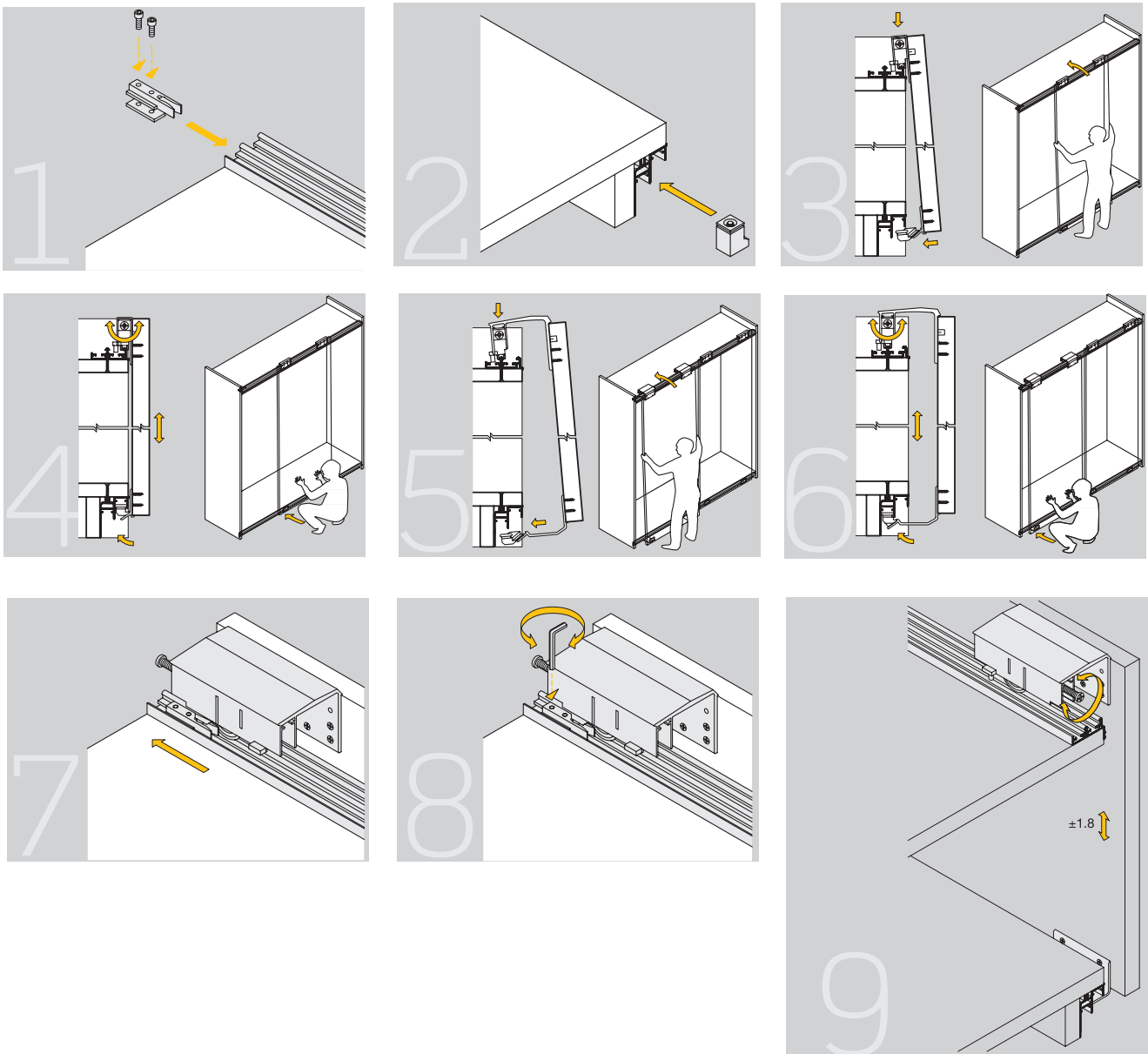
■ Technical data

Assembly

Place upper brakes and lower stops before mounting the track (see diagram 1 and 2). Screw tracks from inside the wardrobe first place the inner doors and then the outer doors. Place the doors in the upper track and then push them down gently so that the fitting is inserted into the lower track (see diagram 3 and 5).

Height adjustment laterally (see diagrams 4 and 6).

Fix stops and brakes once the door is mounted. Follow reverse procedure, for dismantling.



2 MASTER MAS

The aluminium system allows for 25-30-40-50mm. door thicknesses. Each fitting has two distances from the door to the floor 17 and 33mm.



Upper track.

	Cut-to-measure	6 mm. profile	
Natural	707.000.501	707.060.502	6



Heavy duty upper track.

	Cut-to-measure	6 mm. profile	
Natural	707.100.505	707.160.506	4



Lower track.

	Cut-to-measure	6 mm. profile	
Natural	707.300.506	707.360.500	4



Set of upper and lower tracks Ø16.

	Cut-to-measure	
Natural	707.200.502	1



30 mm dust guard for exterior door.

Lenght		
760	704.908.142	5
860	704.909.144	
960	704.910.146	
1060	704.911.141	



MASTER MAS set of fittings.

Load	Skirting board	Interior door	Exterior 30mm.	Exterior 40mm.	Exterior 50mm.	
50Kg.	17mm.	705.157.106	705.057.102			1
	33mm.	705.150.106	705.050.102			
100Kg.	17mm.	705.167.105	705.067.101	703.840.174		
	33mm.	705.160.105	705.060.101	701.740.174	703.850.335	

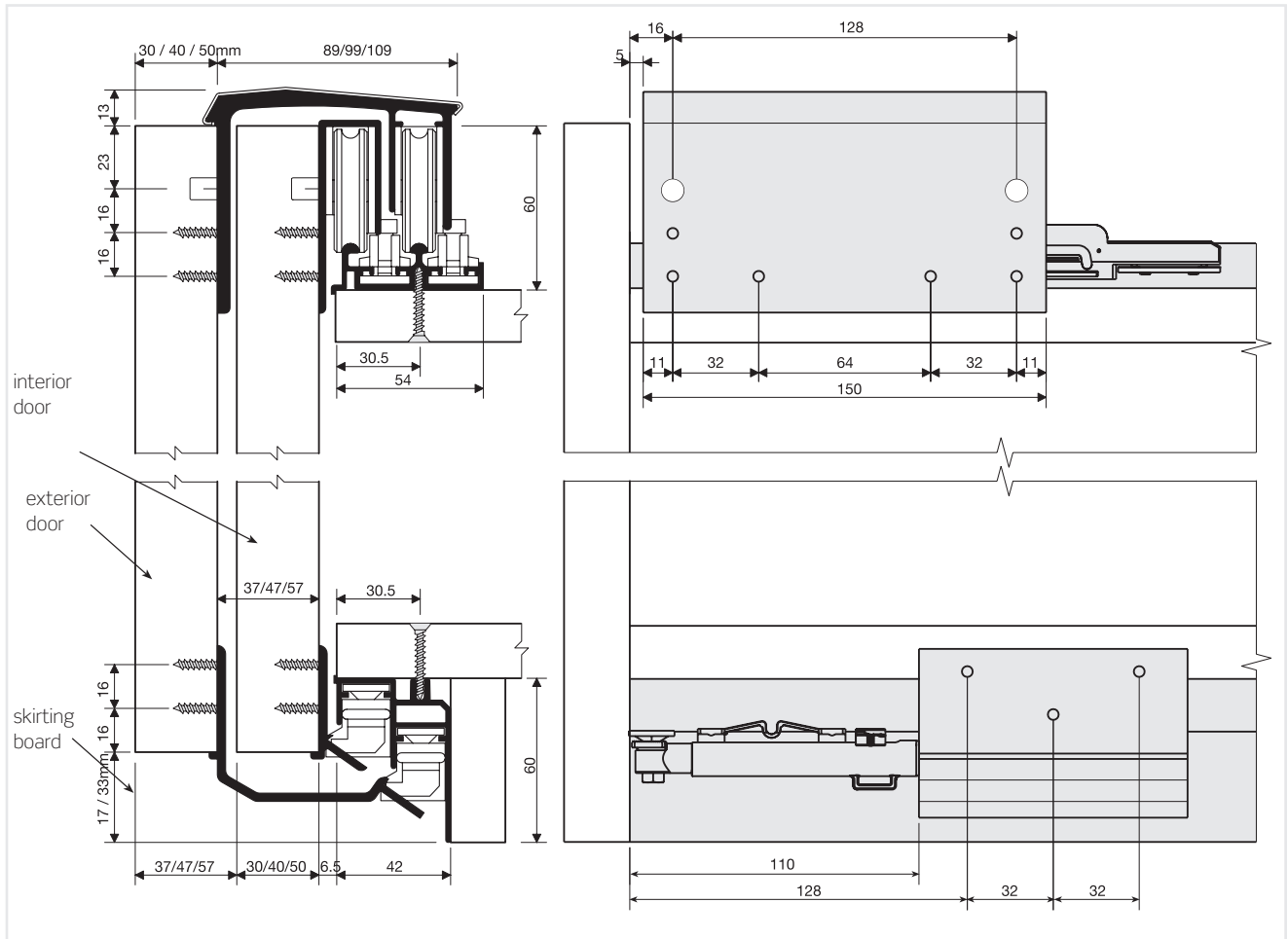
It contains the upper and lower rollers, upper self-closing, lower damper and 18 fixing screws Ø3.9 x 13 necessary for one door.

Exterior door set		Right	Left	Upper self-closing system INDAmatic
	Up			
	Down			
Interior door set				Lower brake Screws
	Up			
	Down			

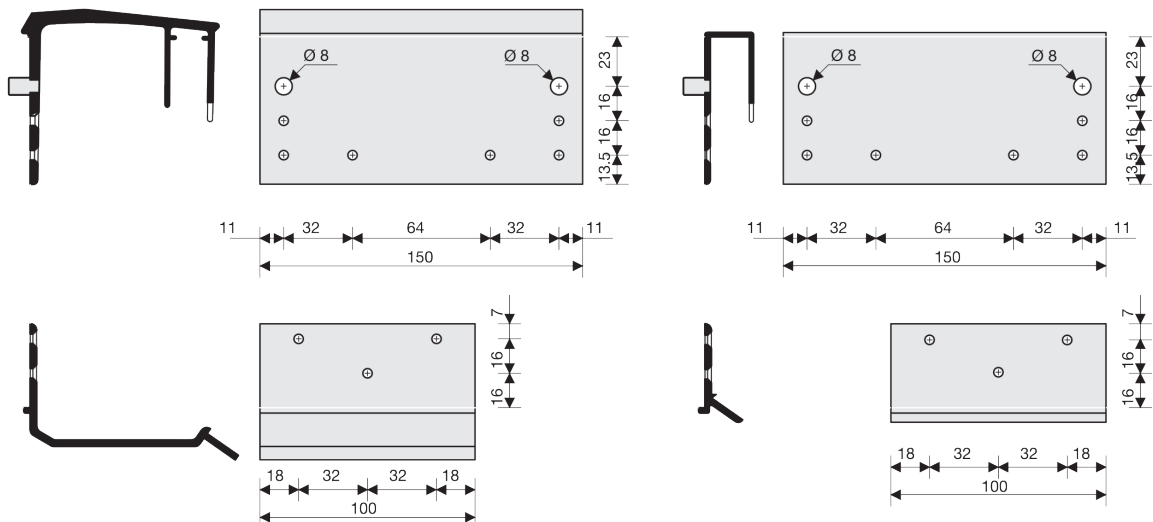
■ Technical data



Assembly diagram



Drilling diagram



■ Technical data

Assembly



Assemble the upper track. Insert the INDAmatic self-closing system, placing the screws towards the centre of the cabinet.

(Diagram 1)

Secure the self-closing system in the required position (nº.2)

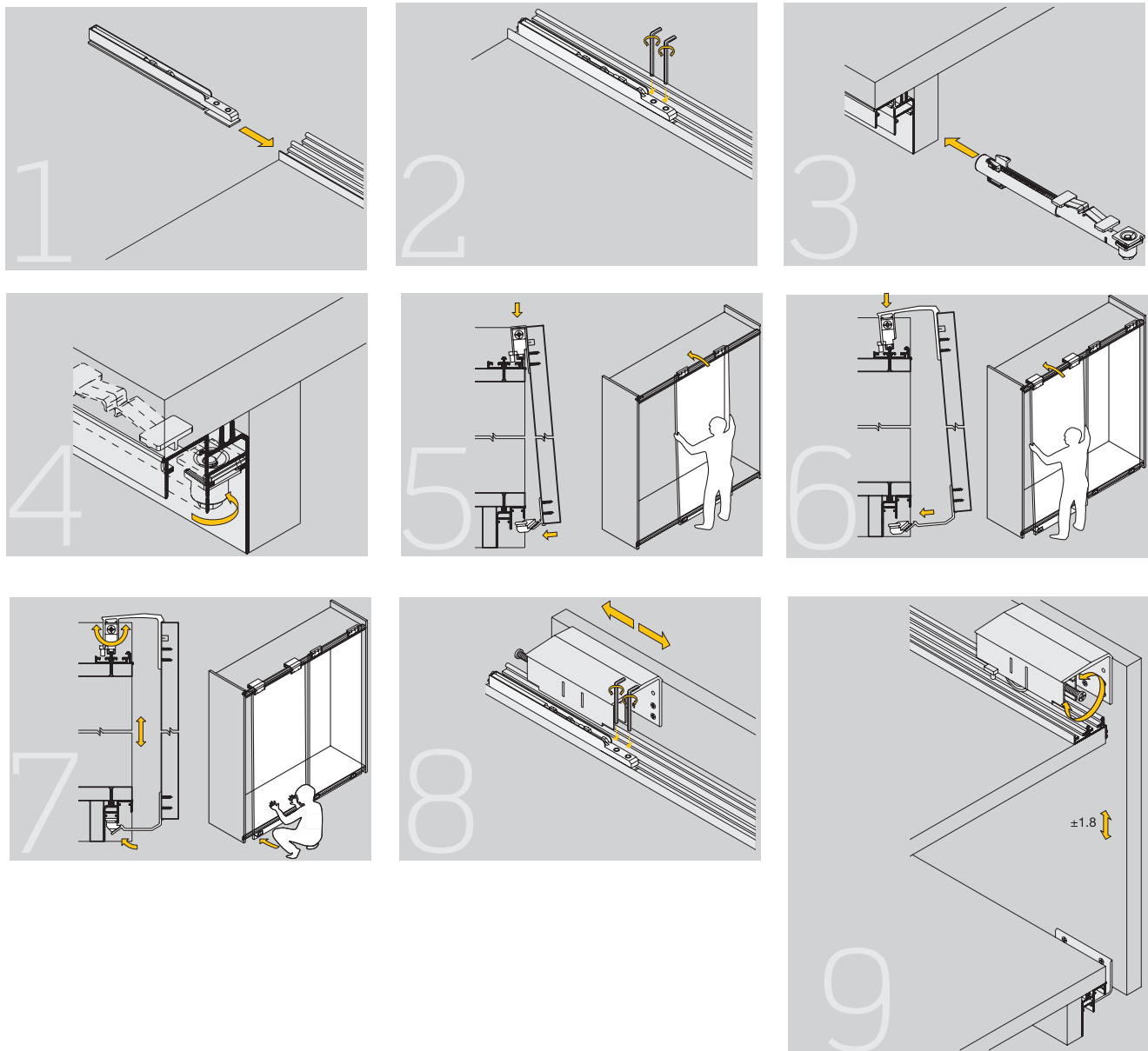
Insert the lower brake, placing the screws towards the exterior of the cabinet. (nº.3) Position and fix the lower brake. (nº.4)

The doors are assembled by placing them in the upper track and then pushing them down gently until the fitting is inserted into the lower track. (nº.5, nº.6)

The doors' height is adjusted from the side. (nº.7)

Once the doors have been assembled and positioned, activate the closing device, opening and closing the door. (Nº.8)

The dismantling process is as the assembly process but in reverse. First release the lower fitting and then raise the door to remove it.



SISTEMA-4

Fittings for hanging doors

The SISTEMA-4 provides functionality, quality and design to the cupboard, in addition to a cushioned closing system thanks to INDAmatic. A very simplified assembly is available in a wide range of finishes.



INDAmatic

1 TRACKS


For door thickness of until 30mm. and 75 Kg maximum. Each fitting has a distance from the door to the floor of 35mm.

Upper track.

	Cut-to-measure	6 m. profile	
Natural	707.000.501	707.060.502	8




Heavy duty upper track.

	Cut-to-measure	6m. profile	
Natural	707.100.505	707.160.506	4




Lower track.

	Cut-to-measure	6m. profile	
Natural	707.300.506	707.360.500	4



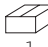
Set of upper and lower tracks Ø16.

	Cut-to-measure	
Natural	707.200.502	1

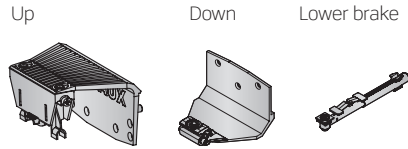


■ Bags Of Fittings


Exterior door set of fittings

700.795.034	 1
-------------	--

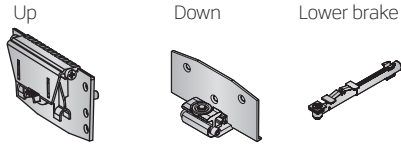
It contains 2 upper rollers, 2 lower rollers, 2 lower brakes and all necessary screws for one door.



Interior door set of fittings

700.785.035	 1
-------------	--

It contains 2 upper rollers, 2 lower rollers, 2 lower brakes and all necessary screws for one door.

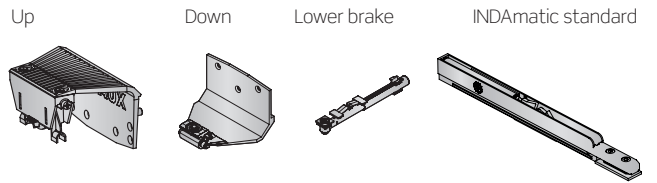


Exterior door set of fittings with INDAmatic



700.775.106	 1
-------------	--

It contains 2 upper rollers, 2 lower rollers, 2 lower brakes, 2 standard INDAmatic devices and all necessary screws for one door.

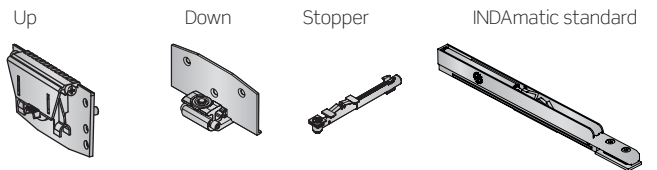


Interior door set of fittings with INDAmatic




700.765.100	 1
-------------	---

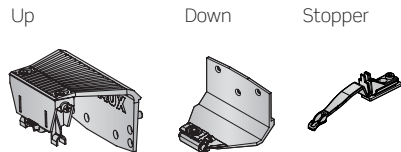
It contains 2 upper rollers, 2 lower rollers, 2 lower brakes, 2 standard INDAmatic devices and all necessary screws for one door.




Exterior door set of fittings with stopper

700.791.033	 1
-------------	--

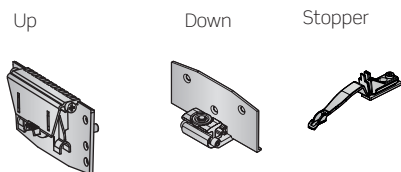
It contains 2 upper rollers, 2 lower rollers, 2 stoppers and all necessary screws for one door



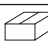
Interior door set of fittings with stopper

700.781.034	 1
-------------	--

It contains 2 upper rollers, 2 lower rollers, 2 stoppers and all necessary screws for one door



INDAmatic standard kit

197.321.106	 100
-------------	--

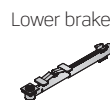
Each reference consists of 2 standard INDAmatic devices.



Lower brake kit

197.305.102	 100
-------------	--

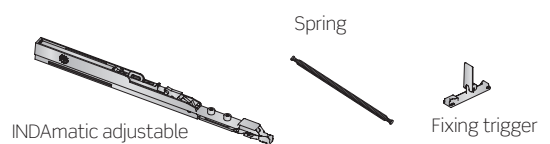
Each reference consist of 2 lower brakes



INDAmatic adjustable kit

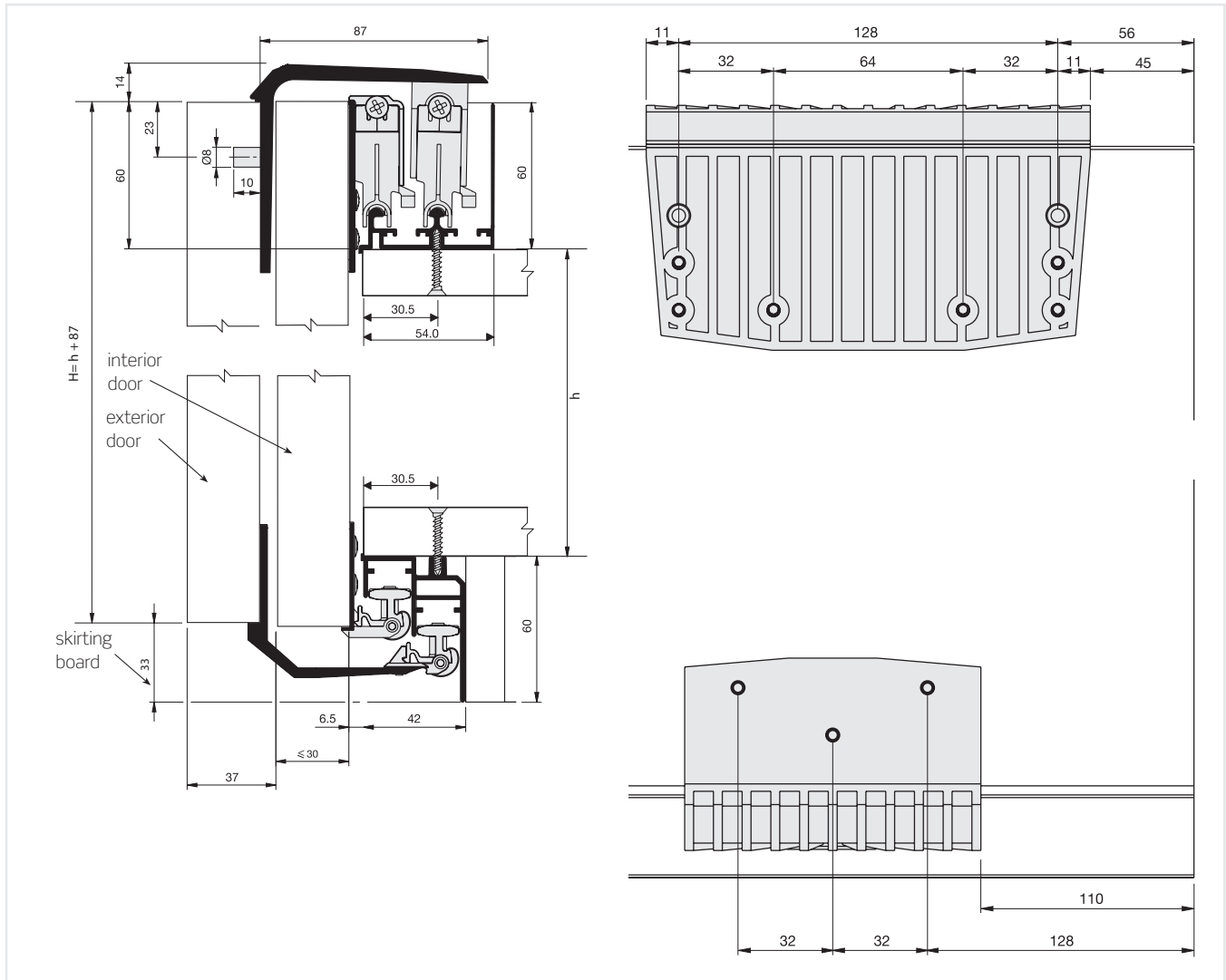
197.325.100	 10
-------------	---

Each reference consists of 2 adjustable INDAmatic devices, 2 springs and 2 fixing triggers.

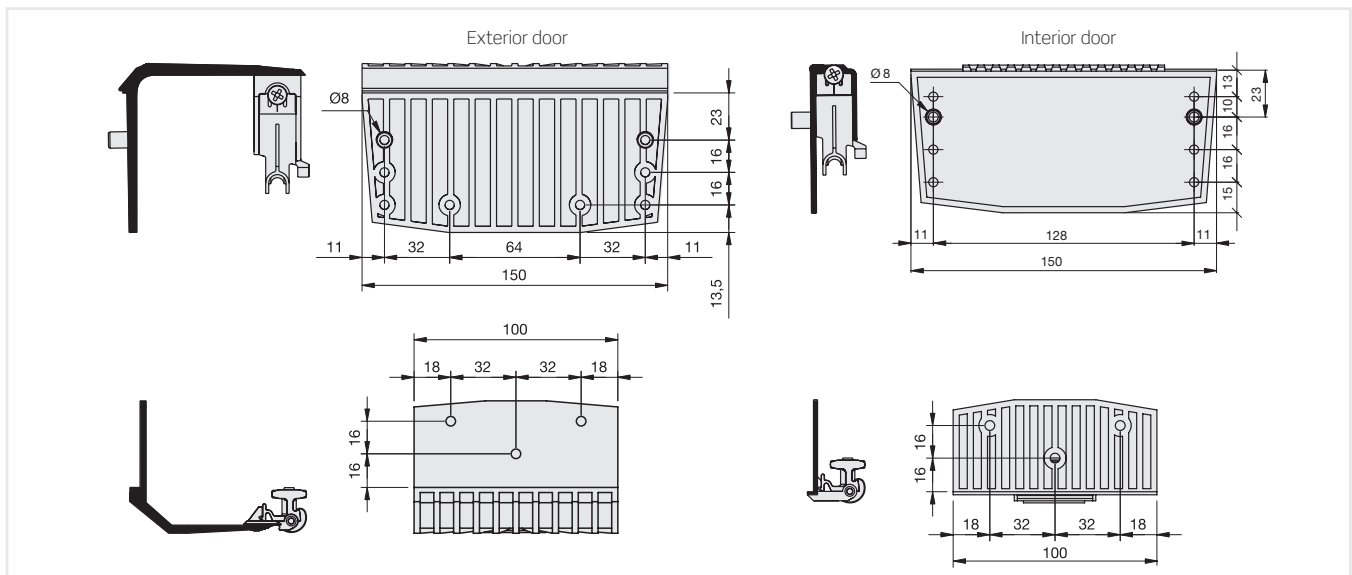


2 TECHNICAL DATA

Assembling scheme

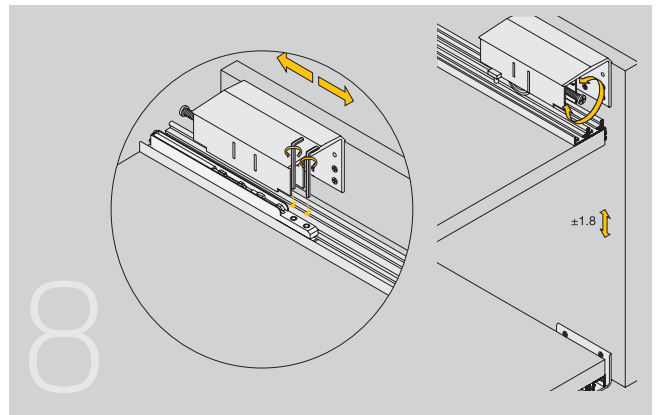
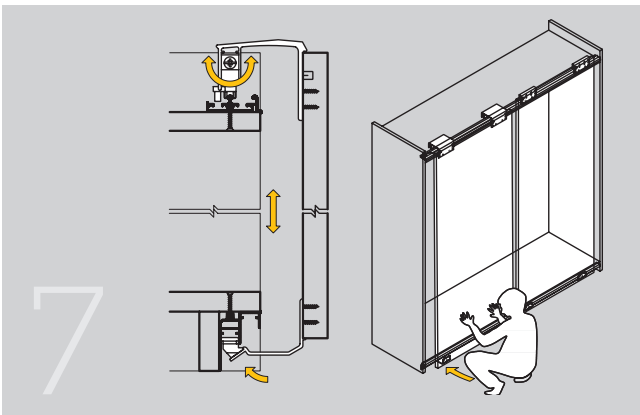
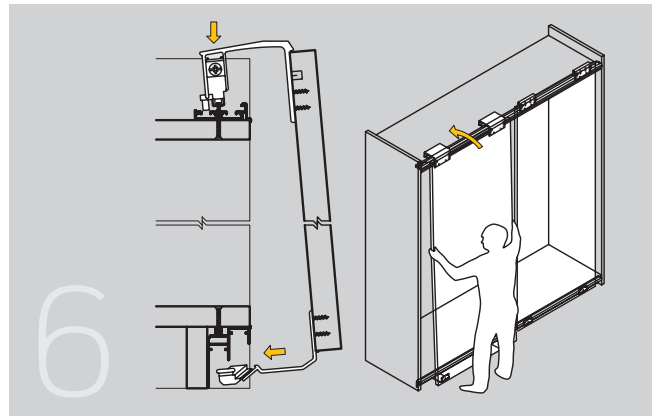
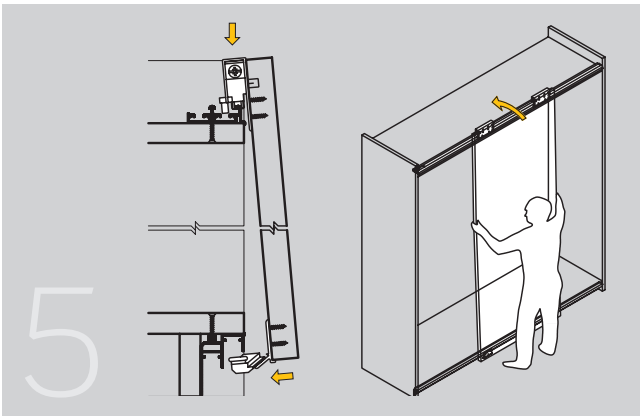
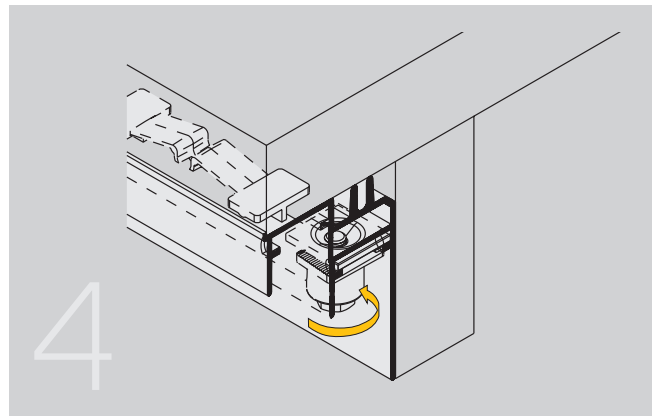
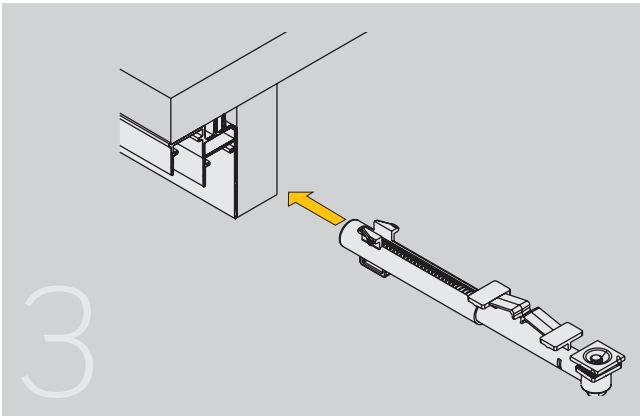
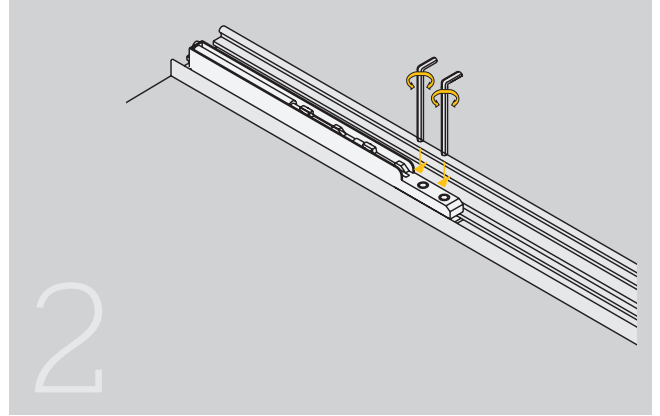
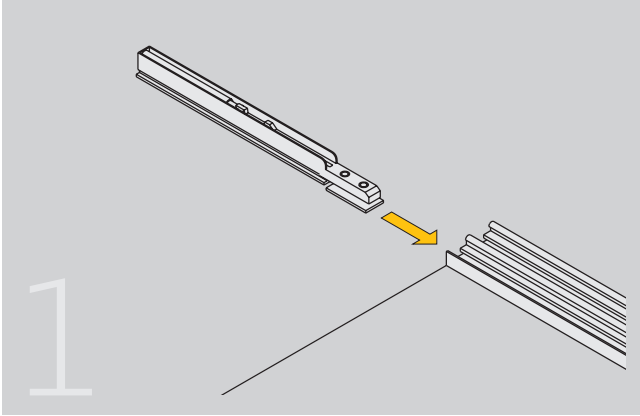


Drilling plan



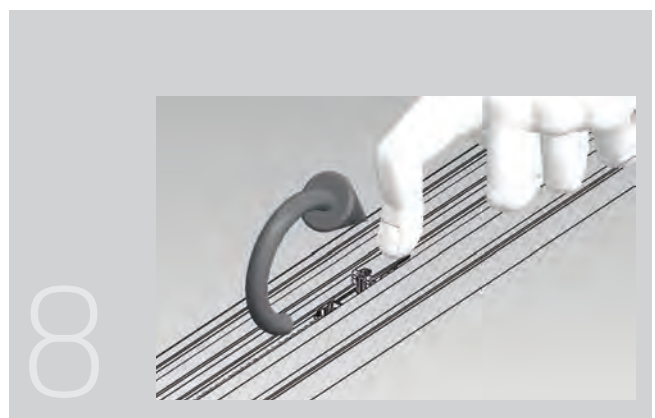
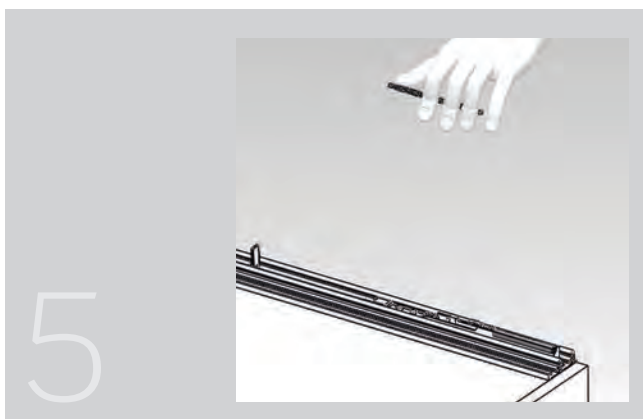
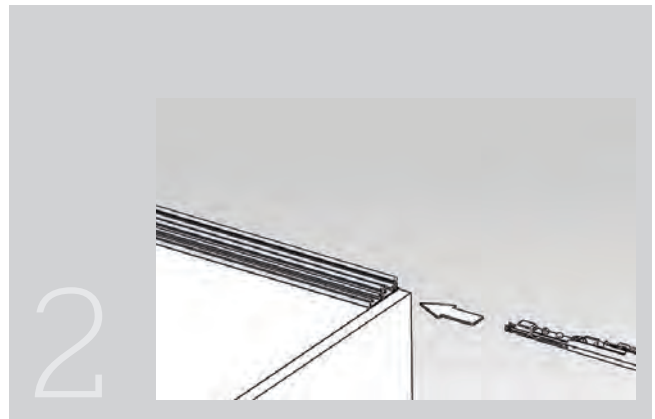
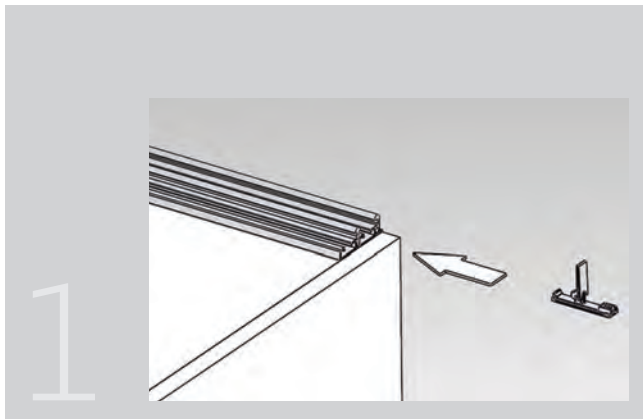
INDA**matic**

INDAmatic standard assembly



INDAmatic adjustable assembly

INDAmatic



NOTES

Dotted lines for writing notes.

