

# STRAIGHTENERS


This fitting helps to correct any possible door warping, and to prevent it from re-appearing.

<b>1</b> STRAIGHTENER 1 .....	543
<hr/>	
<b>2</b> STRAIGHTENER 3 .....	545
<hr/>	
<b>3</b> STRAIGHTENER 4 .....	546

# 1 STRAIGHTENERS 1


It is recommended for use with door thickness of 16 mm and above, and for heights up to 2,600 mm.

## Straightener set.

		
Nickel-plated	754.000.063	50

In boxes of 50 sets.

## Rod.

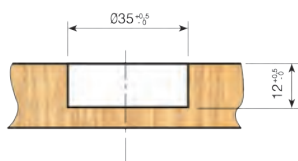
E = Distance between centres	Nickel-plated	
960mm = (32 x 30)	716.009.066	
1.152mm = (32 x 36)	716.011.063	
1.344mm = (32 x 42)	716.013.060	
1.536mm = (32 x 48)	716.015.064	
1.728mm = (32 x 54)	716.017.061	25
1.920mm = (32 x 60)	716.019.065	
2.112mm = (32 x 66)	716.021.062	
2.304mm = (32 x 72)	716.023.066	
2.496mm = (32 x 78)	716.024.061	

Special sizes to order.

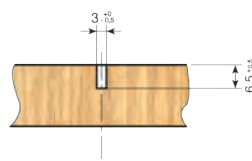


### Measurements for machining on the door

Drilling holes on the body

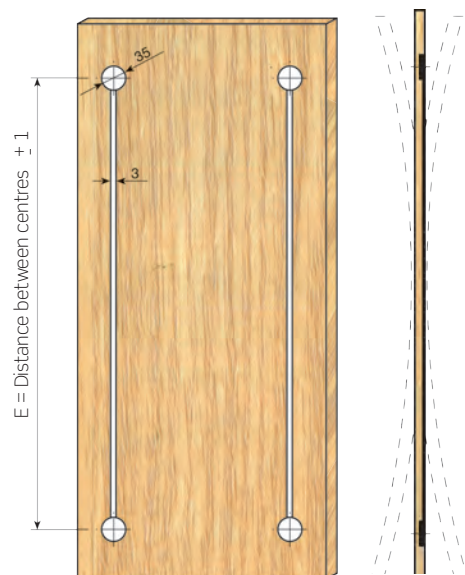


Slot for rod

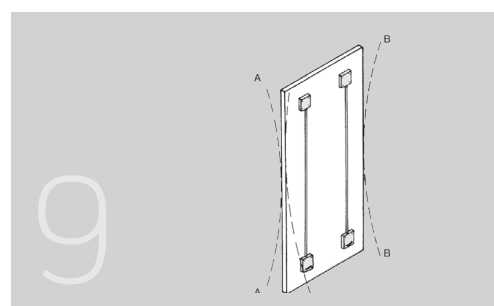
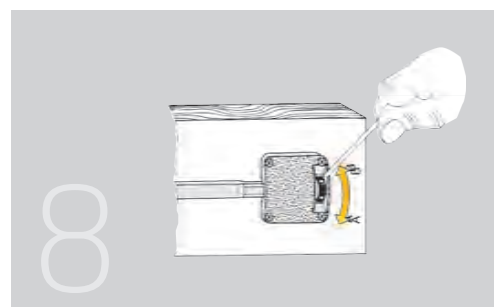
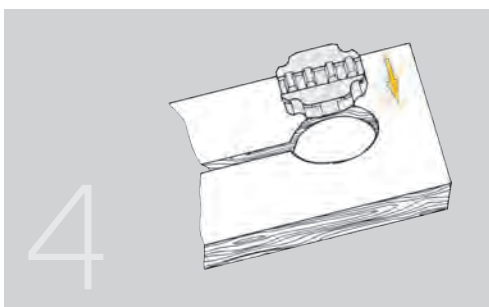
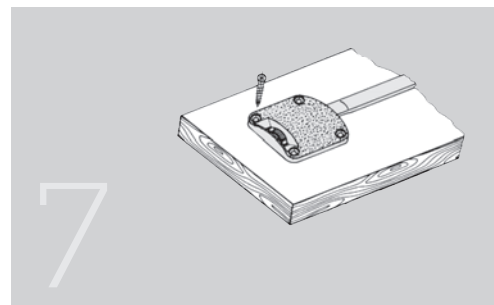
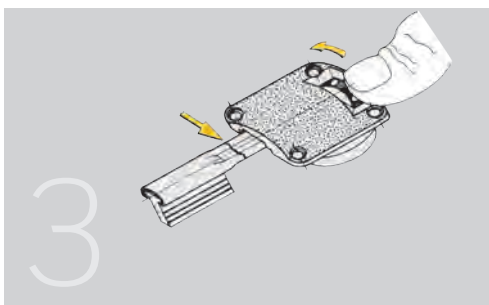
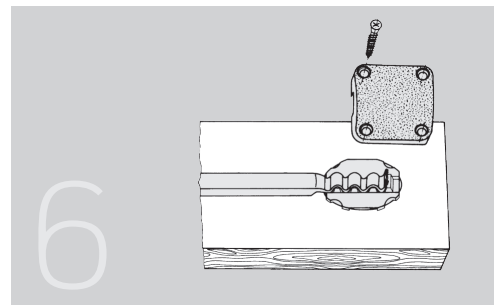
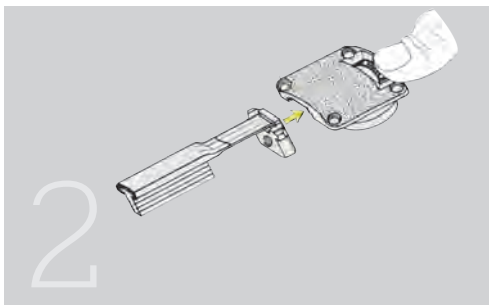
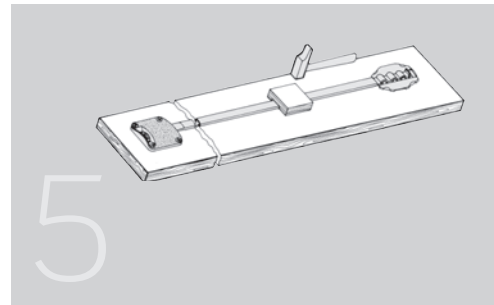
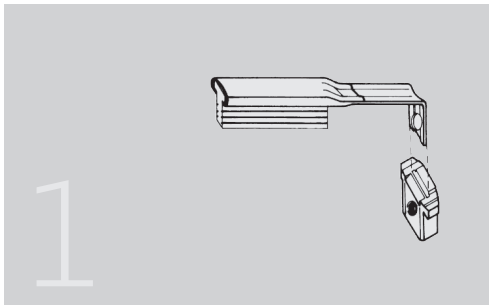


**Note**

2 straighteners per door are recommended.




Assembly



## 2 STRAIGHTENERS 3

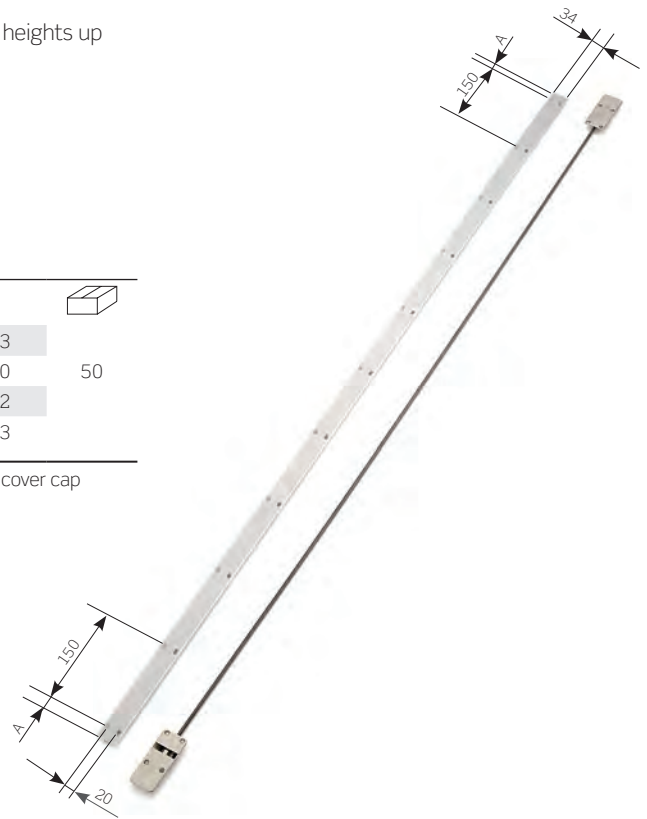
It is recommended for use with door thickness of 16mm and above, and for heights up to 2,600mm.

### Straightener set 3.

E= Dist. Between centres	Threaded stud bolt	Cover cap	Set ref.	
1.600mm (32x50)	1.648mm	1.538mm	754.516.103	50
1.824mm (32x57)	1.872mm	1.762mm	754.518.100	
1.920mm (32x60)	1.968mm	1.858mm	754.519.102	
2.304mm (32x72)	2.352mm	2.242mm	754.523.103	

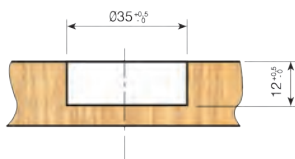
Each set has 1 upper body, 1 lower body, 38 screws, 2 nuts, 1 threaded stud bolt and 1 cover cap profile. Special sizes to order.

Dist. Between centres	A
1.600mm	19
1.824mm	56
1.920mm	29
2.304mm	71

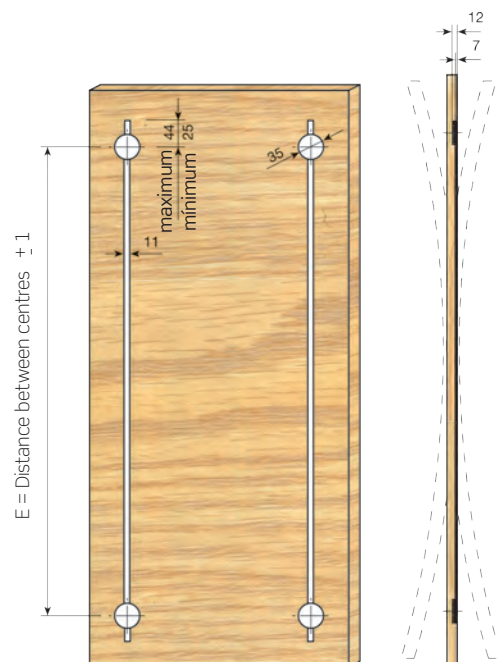
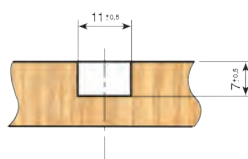


### Measurements for machining on the door

Drilling holes on the body



Slot for cover cap



**Note**

2 straighteners per door are recommended.

### 3 STRAIGHTENERS 4

Designed for 12mm. thick closet doors and for heights up to 2600mm.

#### Straightener set.

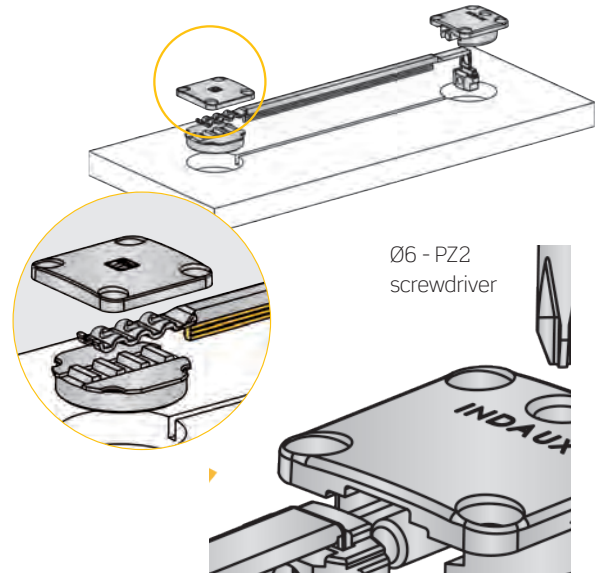
Nickel-plated	754.700.063	50
---------------	-------------	----

In boxes of 50 sets.

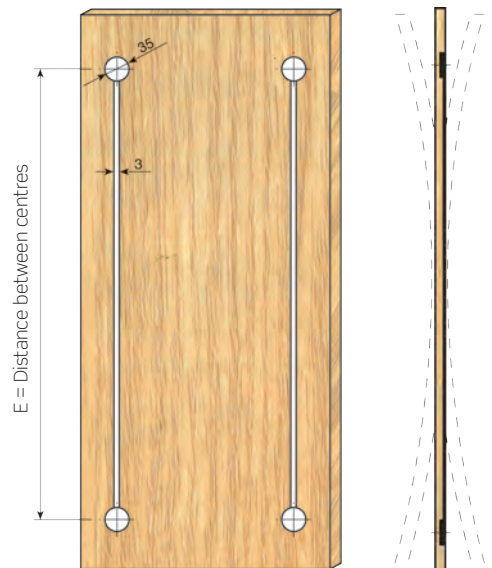
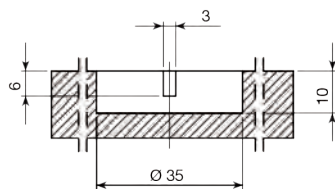
#### Rod.

E = Distance between centres	Nickel-plated	
960mm = (32 x 30)	716.009.066	25
1.152mm = (32 x 36)	716.011.063	
1.344mm = (32 x 42)	716.013.060	
1.536mm = (32 x 48)	716.015.064	
1.728mm = (32 x 54)	716.017.061	
1.920mm = (32 x 60)	716.019.065	
2.112mm = (32 x 66)	716.021.062	
2.304mm = (32 x 72)	716.023.066	
2.496mm = (32 x 78)	716.024.061	

Special sizes to order.



#### Measurements for machining on the door



**Note**

2 straighteners per door are recommended.