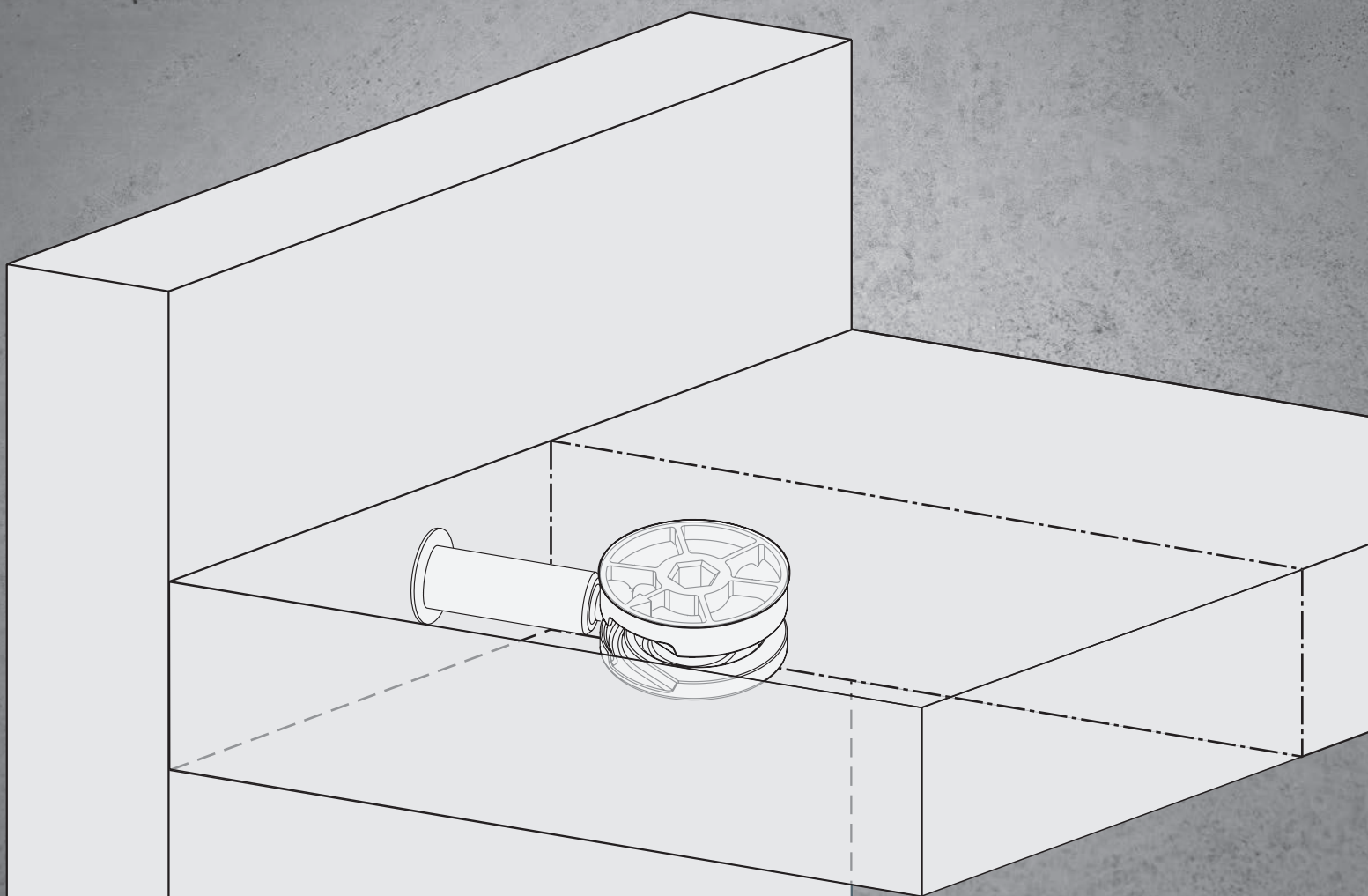


ECCENTRICO A SPIRALE CLOCK Ø25

Eccentrico a spirale

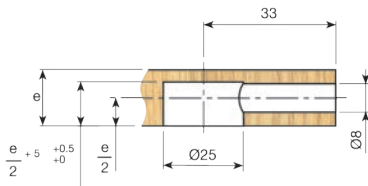
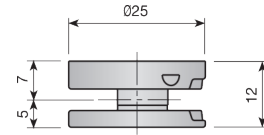
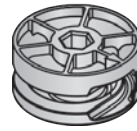
Una soluzione per carichi pesanti, con requisiti di foratura minimi. L'eccentrico a spirale Clock Ø25 risolve il problema di allentamenti dovuti alle vibrazioni. Gamma completa di tiranti.



1 ECCENTRICO CLOCK E COVER

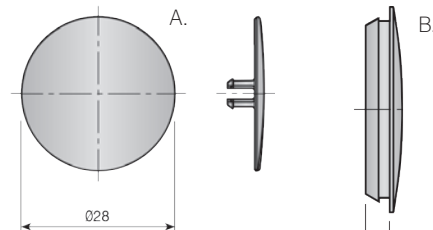
Eccentrico a spirale Ø25 mm.

				
Nichelato		511.525.066		
Zincato		511.525.033	500	




Cover.

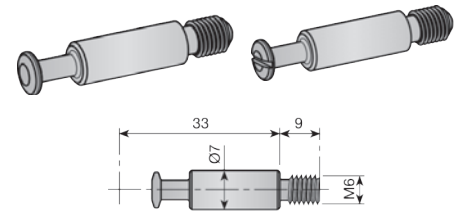
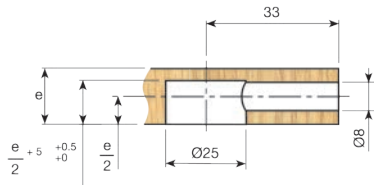
		Spessore pannello Cover			
Nichelato		14 To 20mm	A	530.225.065	
Bianco	RAL 9003	>20mm	B	530.400.006	1.000
Marrone	RAL 8016	>20mm	B	530.400.010	o
Nero	RAL 9005	>20mm	B	530.400.021	2.000
Nichelato		>20mm	B	530.400.065	
Grigio	RAL 7040	>20mm	B	530.400.312	




2 TIRANTI

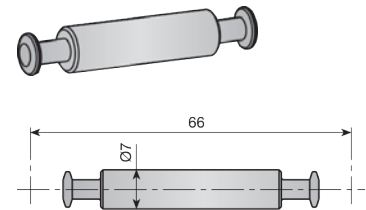
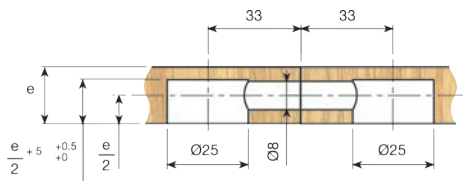
Tirante

	Senza scanalatura	Con scanalatura	
Zincato	520.133.036	520.233.033	500 o 1.000




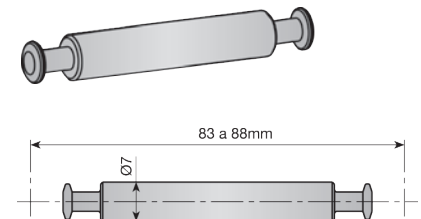
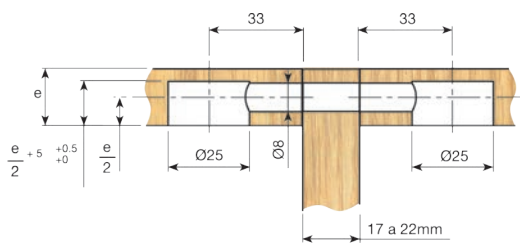
Tirante doppio

Zincato	528.133.034		500
---------	-------------	---	-----




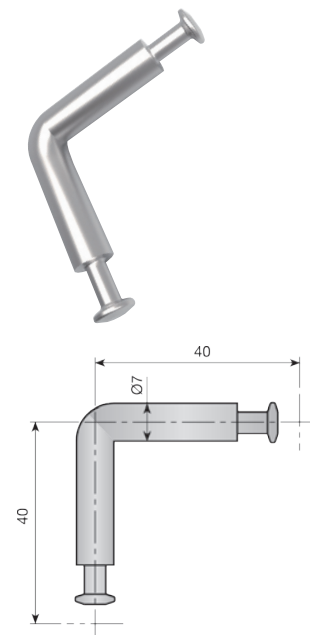
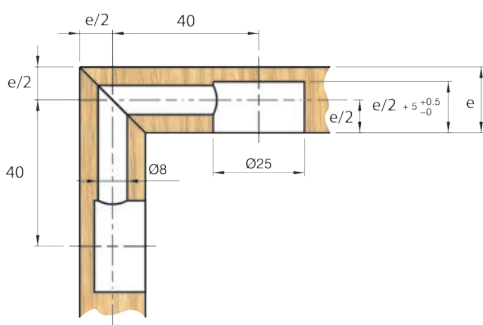
Tirante doppio per pannello intermedio.

Zincato	528.233.031		500
---------	-------------	---	-----

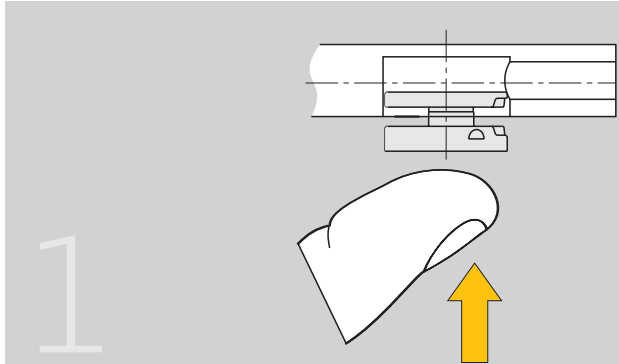


Tirante angolare a 90°

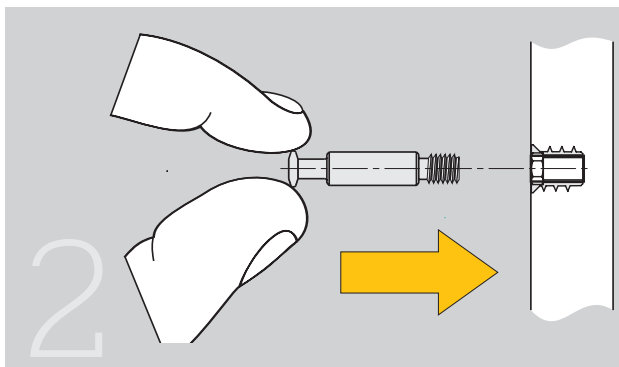
Zincato	528.333.035		500
---------	-------------	---	-----



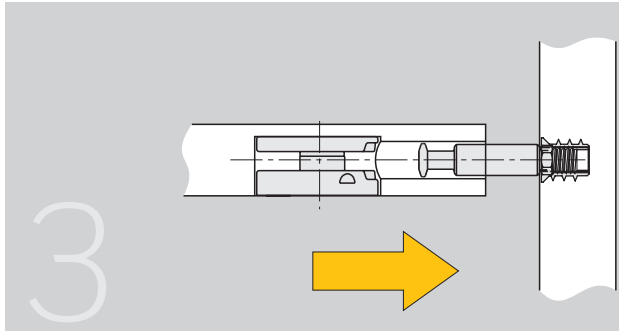
3 MONTAGGIO



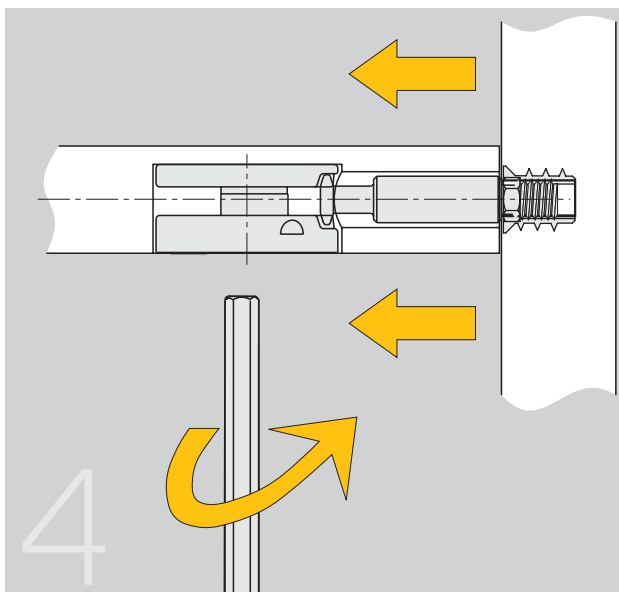
Inserire manualmente l'eccentrico a spirale Clock nella cavità del ripiano o pannello.



Inserire la bussola nella cavità laterale ed avvitare il tirante alla bussola.



Allineare l'eccentrico a spirale con il tirante.



Girando l'eccentrico, il tirante si sposterà verso di esso unendo le due parti, ottenendo così un assemblaggio forte ed efficace.

Per disassemblare il ripiano, seguire gli stessi passaggi invertendone l'ordine.